

# martlesham monthly

JUNE 2021

Produced and Distributed by Volunteers

[www.martleshammonthly.com](http://www.martleshammonthly.com) | 



**BUTCHERS**  
**Duncans**  
**& BAKERY**

Your independent Supplier of Local  
British Meat and Handcrafted,  
Delicious Bread and Cakes

Opening Hours:  
Mon-Fri 8.00-5.00  
Sat 8.00-2.00

See our range of ready to cook dishes  
Credit and Debit card  
facility available

Tel: BAKERY 626828  
BUTCHERS 626044

16-18 The Square

**rdp**  
approachable accountants

[www.rdpaccountants.co.uk](http://www.rdpaccountants.co.uk)

01473 612299  
6 The Square, Martlesham Heath

Regulated by  
**ACCA** Think Ahead

*The*  
**Janet-Sarah**  
*Hair Design*  
*Centre*

17 THE SQUARE, MARTLESHAM HEATH.  
PROFESSIONAL SALON FOR LATEST  
FASHION IN STYLING AND COLOURS.

TEL: 01473 624001

**Martlesham**  
**Body Repair Centre** Est. 2000

**Your Local Paint & Accident Repair Specialists**

- All Major & Minor Accident Repairs (*all vehicles*)
- Body Skirts, Paint Chips, Scuffs & Dents
- Alloy Wheel Refurbishment
- Volkswagen, Audi, Mercedes & Porsche Trained
- Quality Workmanship at Competitive Prices
- Insurance Recognised
- Courtesy Cars (*subject to availability*)
- Rear Parking Sensors – Supply & Fit

Call in today for a free estimate ...  
Unit 19, Martlesham Creek Industrial Estate, Sandy Lane,  
Martlesham, Woodbridge, Suffolk, IP12 4SD  
Telephone: 01394 388799

**MARTLESHAM**  
**HEATH**  
**PAVILION**

**Village Hall for hire with**

Free wi-fi  
Accessible facilities  
Air-conditioning  
New projector  
Small kitchen  
Sports changing room  
Ideal for children's parties,  
meetings, clubs & societies

Check availability & book online at  
[www.martlesham.org.uk/pavilion](http://www.martlesham.org.uk/pavilion)  
or email:  
[bookingsecmh@gmail.com](mailto:bookingsecmh@gmail.com)  
Phone: 07732 199712

## P.A. LAST

HOME & GARDEN  
MAINTENANCE

PATIOS, FENCING, PATHS,  
GARDEN CLEARANCE,  
SHED BASES, TURF LAID,  
RE-POINTING, PAINTING

IPSWICH 287542  
MOBILE 07742015384  
PAUL40LAST@GMAIL.COM

FREE ESTIMATES



Your local  
chartered  
accountants

Call David Chittock  
01473 220022

Email: david.chittock@ensors.co.uk  
[www.ensors.co.uk](http://www.ensors.co.uk)

Making you more than just a number

## Keep Fit

Low Impact Workout

Get  
Active

Stay  
Fit

Improve

• Strength • Stamina • Suppleness

Daytime Classes in

Bromeswell, Felixstowe, Hacheston, Henley,  
Ipswich, Kesgrave & Martlesham Heath

01473 620511

## Sandlings Electrical Services

For all electrical work  
in your home

- ♦ Replacement consumer units
- ♦ New sockets and light fittings
- ♦ Outdoor security lighting
- ♦ Inspections & Landlord certificates

Part P registered, fully insured  
Call for free quote

01728 752005 or 07519 106795

## PAULS TREE SERVICES LTD. Covering Suffolk

- ✓ Free Quotes On Request ✓ Pruning, Reshaping
- ✓ Trees & Shrubs ✓ Fully Insured
- ✓ NPTC Qualified ✓ Tree Surgery & Felling
- ✓ All Waste Chipped & Removed From Site
- ✓ Emergency Services Available
- ✓ Stump Grinding



Felixstowe 01394 277776 Mobile 07979 226497

[www.paulstreeservices.co.uk](http://www.paulstreeservices.co.uk) Lazy Acres, Falkenham, IP10 0QY

## Orwell Structural Engineers Limited

Undertaking alterations to your property and require a Structural Engineer?  
We are a local Chartered Structural Engineering Practice and can provide  
structural design services for your projects including:

- extensions • loadbearing wall removal and internal alterations
- chimney removal • loft conversions • barn conversions • new dwellings

Call to discuss your project or email your plans for a no obligation fee quotation.

01473 719524

[www.orwellstructuralengineers.co.uk](http://www.orwellstructuralengineers.co.uk)  
[info@orwellstructuralengineers.co.uk](mailto:info@orwellstructuralengineers.co.uk)

## Gas Service & Central Heating Repairs

Chris Westaway

British Gas Trained ♦ Gas Safe Registered



## COMPASS HEATING

4 York Road, Martlesham Heath, Ipswich, IP5 3TL

Boiler Replacement ♦ Power Flushing

Central Heating ♦ Boilers ♦ Fires ♦ Water Heaters ♦ Radiators & System Controls  
Landlords Certificates ♦ Gas Safety Inspections

Email: [compass.heating@btinternet.com](mailto:compass.heating@btinternet.com)

Tel & Fax: 01473 333665 Mobile: 07730 580875

## CHILDREN'S SWIMMING LESSONS AT THE BEACON HILL POOL, MARTLESHAM

Adult & Child and Pre-School Lessons: weekdays during the day

Lessons for 4+ Years: after school and weekends

Intensive Weekly Holiday Crash Courses

Maximum 4 in a Class (Adult & Child maximum 7)

email: [swimsure@btinternet.com](mailto:swimsure@btinternet.com) or call 01473 613269



**SwimSure Swim School**

Follow us on Facebook [www.swimsureswimschool.co.uk](http://www.swimsureswimschool.co.uk)

## MARTLESHAM SERVICE CENTRE LTD

- ✧ Servicing and repairs to all makes and models of motor vehicle.
- ✧ Competitive rates on tyres, clutches, brakes etc.

MOT TESTING STATION

MONDAY-FRIDAY 8AM-5.30PM

UNIT 20 BETTS AVENUE  
MARTLESHAM HEATH • 01473 631111

## A bright start at Martlesham Nursery

Looking for a local nursery?  
We'd love to show you around.  
Meet our qualified staff, take  
a look at our play rooms and  
gardens, and find out how we  
can fit in with your needs and  
look after your child.

Give us a call on 01473 611881.

**Pixels Nursery  
Martlesham**

[www.alpha-nurseries.co.uk](http://www.alpha-nurseries.co.uk)

Ofsted 'Good'  
August 2016



# martlesham monthly

**JUNE 2021**

**Produced and Distributed by Volunteers**

## **GIRLGUIDING MARTLESHAM**

Currently we have,  
2 Brownie Units (girls aged 7-10 years),  
2 Guide Units (young women aged 10-14 years) & 1 Ranger Unit (young women aged 14-18 years), meeting in the Parish.

If you are interested in joining as a young member, or helping as a volunteer, please contact Jo on  
martleshamguides@gmail.com or  
www.girlguiding.org.uk/get-involved (HQ).

Come join the fun & start your guiding adventure today

## **1ST MARTLESHAM SCOUTS**

**For all enquiries** regarding joining the groups please contact

Timandra Howell  
**martleshamscouts.thowell@yahoo.com.**

Becoming a helper or hiring of the Scout HQ please contact

Rachel Pennick 01473 610437

## **POLICE**

In case of emergencies please always call 999.

In non-emergency situations call the new number 101.

E-mail: the Safer Neighbourhood Team  
Woodbridge.snt@suffolk.pnn.police.uk

## **COMMUNITY RESPONDERS**

Martlesham Community Responders are a group of 3 volunteers (funded entirely by donations) who are trained to provide first aid and resuscitation skills. We provide a first response to many 999 calls received by the East of England Ambulance Service Trust within Martlesham, Martlesham Heath, Waldringfield, Newbourne and Brightwell, in support of and until the arrival of an emergency ambulance.

For further details contact Johnny Dixon  
01473 622160(johnny.dixon@btinternet.com)



**MARTLESHAM  
COMMUNITY  
HALL**

## **MARTLESHAM COMMUNITY HALL - ROADMAPS AND REOPENING**

Everything seems to be going the right way. The Richards Room is now open again for the allowed range of hires, which will include some of the activity classes from our regular hirers. Some such bookings that would normally be in the Community Hall will be in Richards Room for a few weeks. The Community Hall will be reopening for hire again from 1 July at the latest, depending on how long the COVID-19 Community Test Centre stays open.

If everything keeps going according to the Government's roadmap, most (if not all) social distancing restrictions should be removed on 21 June. From then we should be able to offer hires for the full range of activities and events, as before the pandemic. If you're thinking about a summer event booking, we recommend you still think carefully about numbers attending though.

When you return you'll find a mostly refurbished and redecorated Richards Room - with a new floor and new ceiling tiles! There's also some new and improved flooring in the Richards Room toilets. We hope you'll like it all. We'll give full details next time, when we've finished all the work.

Please check our website - [mchall.org.uk](http://mchall.org.uk) - for general updates and further details. You can contact us with general queries, via our website contact form or call us/leave a message on 01473 623203.

We're taking bookings again. For single event hires, you can check our booking calendars and make a booking request online - [mchall.org.uk/booking](http://mchall.org.uk/booking). You can also call our Bookings Secretary on 01473 623203. We're looking forward to seeing you back.

## **MOBILE LIBRARY TIMES**

**Tuesdays** Angela close: 1.30—1.45pm  
Bridge Farm Day nursery 1.50—2.20pm  
Falcon Mobile Home Park: 2.30—2.55pm  
Douglas Bader: 3.00—4.30pm  
8 June, 6 July, 3 August,

### **Thursdays:**

Douglas Bader: 10.15—11.45am  
24 June, 22 July, 19 August,

<https://www.suffolklibraries.co.uk/mobiles-home/using-the-mobile-library-service/>

### **Joining**

If you live in Suffolk or a neighbouring county complete the online form and we'll post your card to you.

Alternatively, visit any Suffolk Mobile library with proof of identification and we'll give you a card.



## **MARTLESHAM HEATH PAVILION**

We are planning to open the pavilion in phases following the Government's dates.

At first, there will be quite limited options but these will gradually increase during late May and late June. The dates are dependent on final Govt approvals.

The Harry Higgins play area adjoining the pavilion is open.

# MARTLESHAM PARISH COUNCIL

## CORONAVIRUS UPDATE



For the latest government information on coronavirus, please visit [www.gov.uk/coronavirus](http://www.gov.uk/coronavirus).

It is encouraging to see the number of cases and deaths in this country continuing to fall and the success of the vaccination roll-out has been a real boost, but it is not the case in many parts of the world - a bleak reminder of how everyone has been affected by this awful virus. By the time you read this in June, we may be looking forward to the end of most restrictions in this country! The virus will not have gone away altogether though so it is still important to take precautions, be mindful of others' needs and take care of each other.

## ONGOING SERVICES AND MEETINGS

For the time being the staff are continuing to work from home. In order for the staff to return safely to working in the office, some adjustments to layout and equipment will need to be made. This is likely to be ongoing in June & July.

At the end of April, a High Court ruling confirmed that remote council meetings could not continue from 07 May and any formal meetings, which should be held in public, must allow for physical attendance by the public but with due regard for covid safety measures. As we reported last month, as a precautionary measure, we had cancelled committee meetings in May and

June. The full Council meeting scheduled for 02 June has been postponed to 23 June, to be held provisionally in St Michael's Church Centre, a larger venue than the Parish Room. A physical meeting is necessary to approve the end of year accounts and the Annual Governance & Accountability Return 2020/21 for the external auditor. We do not know yet what legislation will allow in June so please check our website and noticeboards for updates on meetings.

Our many working groups can continue to meet remotely, as they are not affected by the legislation, and they may also start to meet face-to-face in smaller groups.

## REPORT ON APRIL MEETINGS

It was a bit strange, but we held our Annual Parish Meeting virtually on 21 April 2021 (last year's was cancelled). Over 20 participants took part, and it was good to hear what has been happening with our local organisations. Refreshments were readily available - at home!

On 05 May our Annual Parish Council meeting took place with reappointments of Chairmen, committees, working groups and representatives on external organisations. We noted just how many volunteers we have, over 50, and we are so grateful for all the work they do, seen and unseen, around our parish. We always welcome more.....

## ARE YOU CONCERNED ABOUT SPEEDING IN MARTLESHAM?

We are in the process of purchasing a Speed Indicator Device (SID) with a 'Slow Down' legend which can be moved around 6 locations in the parish. Six sites have been agreed with Suffolk County Council: 3 on Eagle Way, 2 on Main Road and 1 site on The Street. Thank you to those who have already come forward but the more the merrier! Volunteers will go out in pairs to move the SID, on a rota basis. We are also

seeking someone with IT skills to take on setting up the data gathering system to show us the scale of our speeding problems. Please get in touch with the Clerk if you're interested in helping.

## PARISH COUNCILLOR STILL NEEDED - COULD THAT BE YOU?!

Join others and help improve the quality of life for your fellow residents. If you are interested in what it means to be a parish councillor, take a look at our website and facebook page, join a council meeting or contact the Clerk who can put you in touch with an existing councillor to hear all about it first-hand!

## NEXT PARISH COUNCIL MEETING: WEDNESDAY 23 JUNE, 7.30PM, ST MICHAEL'S CHURCH CENTRE, MARTLESHAM HEATH

(In case of change, please check details in advance on our website or by contacting the Clerk)

Members of the public are welcome to observe and participate in the public forum at this meeting.

## CONTACTING THE COUNCIL

Clerk to Martlesham Parish Council, Parish Room, Felixstowe Road, Martlesham, Woodbridge IP12 4PB

Telephone: 01473 612632 - please leave a message if no reply and we will get back to you as necessary

e-mail: [clerk@martleshamcouncil.org.uk](mailto:clerk@martleshamcouncil.org.uk) (best way to contact us)

website: <http://martlesham.onesuffolk.net>

Please "Follow Us" on our Facebook page which is @Martlesham Parish. The full address is <https://www.facebook.com/MartleshamParish>

## Pop Up Shop

St Michael & All Angels Church

The Green, Martlesham Heath

Every 2<sup>nd</sup> & 4<sup>th</sup> Sunday of the month 1-2pm



Finding food bills a challenge?

Come and fill one of our carrier bags for £2

13 & 27 June

11 & 25 July

08 & 22 August

## **FROM YOUR CONSERVATIVE DISTRICT COUNCILLOR FOR MARTLESHAM AND PURDIS FARM.**

### **CHRIS BLUNDELL**

The Pandemic I am writing this on the 10th of May 2021. The prime minister has today outline further easing of restrictions which is great news especially since it means that more people can meet in public and in private and also the hospitality businesses can open their doors. However, we must still not be complacent.

**The Election Results.** For many of us, who wins what in an election such as we have just seen does not seem to be important. It is in fact very important because the incumbents are obliged to implement policies that are in part dictated by HMG, the needs of the services they are responsible for and the needs and requirements of the communities and businesses in their areas. It is also a duty that whichever political party is elected, must work with all councils in their areas: County, District/Borough and Parishes. None of the councils are allowed to dictate policies of the elected Police Commissioners.

### **The East Suffolk Bounce Back Fund.**

This was a fund of over £100,00 created to help smaller companies restart their business. There were many applicants and I was please to advise a number of businesses to apply for funds, so I was pleased to find that having recommended several companies to apply, some, including the Runway and Woodbridge Town Football Club, gained some financial benefit. It is worth remembering that although the local football club has the title 'Woodbridge' it is in fact located in Martlesham Parish and many of the local young men and teenagers do play there.

**Planning Matters.** There are a number of significant planning applications in the pipeline for the Martlesham with Purdis Farm Ward. Probably the most significant one at the time of writing this is that of a retirement home with forty-one apartments proposed for the Square, Car Park and Runway area on Martlesham Heath. By the time you read this the application will have been determined.

Community Enabling Budgets. Each

Suffolk Coastal District Councillor will again have another £7,500 to spend on projects that clearly benefit the communities in their ward. If an organised community group with which you are associated with could clearly benefit from in injection of funds, then please apply.

### **The East Suffolk Community Partnerships.**

The local partnership that covers Kesgrave, Rushmere Saint Andrew, Martlesham with Purdis Farm, Carlford and Fynn Valley will continue to meet this year and will again have a budget of £25,000. Allocated to it. More parishes and voluntary organisations have joined the scheme and were welcomed by the Partnership team. The main theme again this year will be on 'Environmental Care, in whatever form the community workshops wish to promote.

### **East Suffolk Council Meetings.**

As you may have learned from either the press or the media, council meetings now again have to meet face to face with some form of social distancing in place. Speakers at formal meetings such planning and similar critical meetings will have to make their wish to speak known before hand when they may be able to join by zoom or actually be present in the meeting. The full East Suffolk Council meeting scheduled for May 2021 was cancelled. It is to be hoped that the next full council meeting scheduled for July will be able to meet as per normal. We will have to wait and see.

**Caring.** Caring both for our neighbours and our families is a heavy task especially when one person in a family may be ill or disabled. If you can help a carer at any time please do so as that action can and does lift the wellbeing of our community as well as caring for the environment. I have been a family carer for the last two years and have learned some of the trials and tribulations that occur. Sadly, I will miss my recently lost partner very much.

*If you would like to have further information on any of the foregoing topics or any other East Suffolk Council matters, please contact me by email at [chris.blundell@eastsoffolk.gov.uk](mailto:chris.blundell@eastsoffolk.gov.uk)*

*Otherwise by phone on 07768213251 or 01473 622716.*

## **Martlesham Heath Householders Ltd**

### **AGM**

The MHHL AGM is scheduled for the 7th June 2021. As per the previous report in last months' magazine, we did intend to hold it on the next day but had to change plans. We are unsure as to whether we can have a physical meeting since the Covid-19 rules are subject to change. Please refer to [mhhl.co.uk/AGM](http://mhhl.co.uk/AGM) for the latest information.

### **Housing Developments**

MHHL have been involved in lots of discussions with the three housing developments that are being planned and have given our responses via media outlets.

### **Fly-Tipping**

Unfortunately, we are still receiving reports of more fly-tipping. A car bumper has been left in Birch Woods behind Birch Grove and a butane gas bottle on the Western Corridor next to Dobbs Lane. If anyone is witness to such events, please inform the police.

### **Dog Fouling**

Dog fouling in Birch Woods and SSSI particularly on the pathways and in close proximity to a dog bin is getting ridiculous, please clear up after your dog.

### **Better Weather**

As we move from Spring into Summer, I hope that everyone makes use of the open areas on the heath, the woodland and the village greens. We are lucky to have such beautiful surroundings – a big plus for all of us on Martlesham Heath.

### **Contact and further Information**

*If there are any issues that you feel that need attention please do not hesitate to contact Martlesham Heath Householders Ltd by leaving a voicemail on 01473 612207 or by email to <mailto:martleshamheathhouseholders@gmail.com>*

*or by post to Martlesham Heath Householders Ltd, PO Box 897, Martlesham Heath, Ipswich, Suffolk, IP1 9PB.*



### Yoga Classes in Martlesham Heath & Melton

Beginners, Returners & Advanced

### Individual Yoga Programmes can help with

Back pain, posture, sports performance and injury prevention

### Personal Coaching to help you manage

Anxiety, performance nerves, challenges at work and at home

### Izzy Ixer

MCMI, BWOY Dip, British Wheel of Yoga Diploma Teacher and Coach

The Natural Health Centre, 24A Thoroughfare, Woodbridge IP12 1AQ  
Ned Wombwell Osteopathy, Albany Villa, Melton Road, Woodbridge IP12 1PD  
Woodbridge Complementary Health Centre, Sandy Lane, Martlesham IP12 4SD  
Telephone: 01394 388234 www.wchc.info

#### Wellbeing Coaching:

Help with managing life's challenges at work and at home

**Telephone: 01473 625115**

email: izzy.ixer@bopenworld.com

www.izzyyoga.co.uk • www.bluepebblecoaching.co.uk



### KITCHEN AND BATHROOM INSTALLATIONS

Guaranteed Quality Workmanship

Phil 07758215618

Darren 07809723186

Darren Smith / Philip Francis  
KITCHEN AND BATHROOM SPECIALISTS

darren.dsdesign@ntlworld.com /  
space.francis@ntlworld.com

## BACK AND FOOT CLINIC

IN PAIN? GET IN TOUCH

Over 20 years' treating a wide range of problems:

- Back Pain • Headaches • Sciatica • Joint Problems • Arthritic Pain

.....  
Foot Health Care

Toe Nails cut • Corns and Calluses removed, and much more

### Clifford Spencer Bull DO, ND, MAO

The Osteomyology Clinic  
106 Garrison Lane  
Felixstowe

**01394 277689**

Free Parking

Woodbridge Complementary  
Health Centre  
Sandy Lane, Martlesham

**01394 388234**

Free Parking

for more information call or visit [www.backandfootclinic.co.uk](http://www.backandfootclinic.co.uk)

Over 20 years  
experience

**digital  
dimensions**



Aerial, Satellite And CCTV Specialist  
Covering Ipswich And The Surrounding Area



- Digital TV aerial installation
- Freesat installation
- Poor signal problems aerial & satellite
- CCTV installations
- Freesat & SKY service calls
- Multiroom viewing aerial & satellite
- FM & DAB aerial installations
- TV wall mounting
- Domestic and commercial installation
- Free quotations

Call Digital Dimensions on 01473 716976 or 07860 156421

Web: [www.digital-dimensions.tv](http://www.digital-dimensions.tv) Email: [info@digital-dimensions.tv](mailto:info@digital-dimensions.tv) f Like us on Facebook

# MARKS & MANN

estate agents

## TIME TO MAKE A

# M VE

Call 01473 396007

[contactmartlesham@marksandmann.co.uk](mailto:contactmartlesham@marksandmann.co.uk)

[www.marksandmann.co.uk](http://www.marksandmann.co.uk)

## Hedgehog Nursery

The kitchen garden is showing signs of life! The children have taken their job of taking care of the plants very seriously. We are watching closely to see if we need to water the plants and making sure that we pull out any cheeky weeds!



A giant beanstalk had mysteriously grown in the garden and 'something' enormous had left a gigantic footstep on the playground. We had great fun measuring the footstep, imagining what could be at the top of the beanstalk and yes, you guessed, we read the story of Jack and the beanstalk. The Hoglets painted their very own giants and described their giants with fantastic vocabulary!

For our poetry day, we had fun learning a poem called 'On the Ning Nang Nong' by Spike Milligan. It was quite tricky because it made us laugh too much!

We offer wrap around care from 7:30 to 18:00 with our breakfast and afterschool clubs. Hedgehogs Nursery is open Monday to Friday for 3 and 4 year olds. If you are looking for a Nursery, please don't hesitate to get in touch with the School Office on 01473 623790 for further details.

## Gorseland Primary School

We had a wonderful Poetry week, which culminated in a visit from the poet, Ian Bland. The children were very much inspired by him to write and perform their own poems and we are very grateful to our PFA for supporting this visit.



We now have a number of events coming up to look forward to including Year 4 visiting West Stow Anglo-Saxon settlement, Year 5 having a Viking Day and Year 6's Film Week.

---

## The 1st Martlesham Scout Group Beavers are on a mission to keep

**Martlesham rubbish free.** The Beavers and their families have been out around the village picking up litter and disposing of it responsibly. Sadly, the Beavers have found lots of discarded food wrappers, glass bottles and drink cans, most of which have been left in areas where there are plenty of bins; the Centenary play space being a prime example. We have been learning all about recycling and how long it takes rubbish to decompose. Did you know that a fizzy drink can could take 140 years?

Whilst the Beavers have been litter picking, they have noticed a large number of doggy bags that have been left in bushes or in some cases, hanging on trees! Its fantastic that owners are clearing up after their pets, but if there is no dog bin nearby then please, please take the bag home with you and dispose of it. You may have noticed a number of posters around the village which the Beavers have made to encourage dog owners to be more responsible and protect the local wildlife.

Please help us by joining our mission to keep our village clean. Pick up your litter or doggy bags and if you can't dispose of them appropriately, please take them home with you. Beaver Benjamin asks, "please look after our planet and keep it clean". Beaver Jude says, "it's everyone's responsibility" and a message from Beaver Hazel, "don't be a rubbish resident!"

1st Martlesham Beavers is in need of volunteer leaders. If you could spare an hour or two a week to support this group, please contact [beatafile@hotmail.com](mailto:beatafile@hotmail.com).



**Do you have or care for pre-school aged children?**

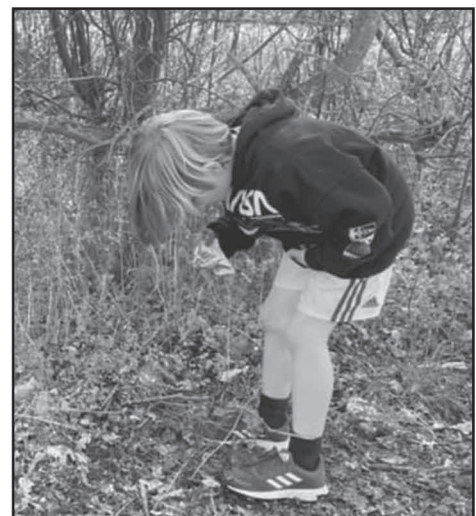
**Would you like to receive our Bright Stars Activities sheets?**

Bright Stars normally runs free fun Activity Sessions for Pre-school aged children with their parents, grandparents, friends, family and/or carers at St Michael's Church Centre, Martlesham Heath, on the 2nd and 4th Monday mornings of each month during term time. They usually involve singing, games, making crafts to take home and telling stories from the Bible.

At present we are keeping in touch remotely, sending out activity sheets by email and/or post for the children to enjoy doing with their family and/or carers, due to the coronavirus pandemic restrictions which means we are unfortunately not able to meet in person. Recently we made wind mobiles that we can blow or hold in the wind, which spiral around and remind us of the strong wind that Jesus's friends heard at Pentecost. We also had a figure to dress to create a picture of ourself, after reading about the first part of Psalm 139 which writes about God knowing all about us and caring about us, every one of us.

If you have or look after a child/children of pre-school age and would like to receive our sheets, please give us a call on the telephone number below; we look forward to hearing from you.

*If you would like further information please contact: Sonya & Maureen Burrows  
Tel.01473 625196*



## Every day is a new adventure, bring your wellies!

At Birchwood Primary School, children in all year groups regularly take learning outdoors. This may involve making muddy faces, building dens, identifying seasonal change, collecting natural treasures, whittling sticks, toasting marshmallows on the fire or simply exploring learning activities away from the classroom.

Among lots of benefits, time spent investigating in this environment can rapidly improve self esteem, social skills, concentration levels, physical ability and is thought to help relieve stress and anxiety.

In recognition of Mental Health Awareness week (10th – 16th May 2021), children at Birchwood seized further opportunities to connect with nature in our on-site Forest School.



## Martlesham Conservation Group

Yet again this year the weather so far seems to have been all over the place with a really cold temperature in February, very dry through March and April and so far a wet May.

The impact on our wildlife may be difficult to predict and understand. Migrant birds seemed much later arriving on the whole having been held back by persistent northerly winds for a while in spring. Various early butterflies appeared in good numbers in the warm spells but may have been knocked back by the colder spells.

However, we have a good number of Nightingales out on the heath SSSI this year in the thicker more bushy vegetation, with the males giving vent to their complex and varied song. I was fortunate to hear two adjacent males getting louder and louder as they competed against each other from bushes on either side of a path. They will often sing through the night and large parts of the day too and can usually be heard singing through into early June but then go quiet.

So listen out in the first week of June as this could be your last chance to experience this wonderful birdsong until next year.

Other migrant birds that have been making themselves heard include the Whitethroat, Lesser Whitethroat, Garden Warbler and Black Cap. Butterflies such as the bright yellow Brimstone, Orange Tip, multi-coloured Peacock, Small Copper and Green Hairstreak have also added colour and movement to the spring landscape. In June these butterflies will be succeeded by summer species such as the Meadow Brown, Gatekeeper and three types of Skipper.

June should also see the emergence of the adult Silver Studded Blue butterflies on the heath; the caterpillars of these small blue butterflies use heather (and some other heathland plants) as their food plant but also involve small black ants in their life-cycle. Both need to be present for a successful colony. Last year was a poor year for these butterflies so it will be interesting to see how they get on this summer. Later in the month or early in July we will attempt to count these butterflies on the heath SSSI and Common, please get in touch if you would like to be involved.

Our grateful thanks go to Martlesham Parish Council for supporting us by covering the cost of our insurance for this year.

Our work parties are likely to start up more regularly dependent on conditions with respect to Covid. Please get in touch if you would like to get involved.

Phil Smith 01473 625630 - or via e-mail to [martleshamconservationgrp84@gmail.com](mailto:martleshamconservationgrp84@gmail.com)

## Martlesham Primary Academy

What an exciting start to the Summer Term at MPA. Our upper Key Stage Two children have been dissecting lambs' hearts. The children identified the different arteries and veins before putting water through to see how the blood travels. The children then opened the heart to look at the atriums, ventricles, and valves.

We were delighted to visit Ipswich Town Football Club with girls from Years 3 and 4.

We took part in a community football challenge. The girls were fortunate enough to train with Ipswich Town coaches, meet the Ipswich Town Women's Football Team and play against other Ipswich schools.

We are very proud to be a Daily Mile School. We took part in the 'England Does the Daily Mile'. All children participated and shared why the daily mile is important to them. We were also very excited to welcome ITV Anglia News to film this event. It was amazing to see our school on the ITV Anglia news that evening!

We are MPA and we are proud! So many exceptional learning opportunities for our children.



At Footsteps we have been continuing to offer counselling for young people throughout the pandemic.

As you will understand for some the lockdown has been particularly difficult and we have seen a significant increase in the demand for our services.

We are immensely grateful to our supporters who give their time and money to enable us to carry on and we are now looking forward to the summer and the freedom to hold some fundraising events.

The first of these will be a barbecue on Saturday June 26 from 5pm to 7pm. We're hoping to hold this on the Green. Please bring your own chairs and picnic blankets, and also your own drinks. Everyone is welcome to join us.

Please email us for more details.

Email: [info@footstepswwy.org.uk](mailto:info@footstepswwy.org.uk)

Christine Pinder





## DOYLE ELECTRICAL SERVICES LTD.

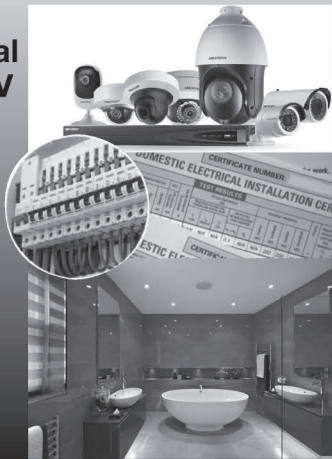


### Domestic and Commercial Electrical Contractors, Solar PV and Renewable Energy Specialists

NIC EIC Approved Contractors, established for over 25 years. New Commercial and Domestic Electrical Installations, LED Lighting, Electrical Safety Testing, Electric Vehicle (EV) Charge Points, Structured Cabling, CCTV, Fire Alarm, Solar PV.

Telephone: 01473 622674  
Fax: 01473 620941  
Email: sales@doyleelectrical.co.uk  
Website: www.doyleelectrical.co.uk

Unit Q Bristol Court,  
Martlesham Business Park,  
Martlesham, Suffolk IP5 3RY



## BOTANICA NURSERY & ARBORETUM

### WE ARE RECRUITING!

We have new opportunities for a variety of Nursery, Landscape and Admin roles. We are also looking for team leaders.

If you have the skills we are looking for we would be interested in talking with you.

Please see our website for further details.

[www.botanicaplantnursery.co.uk](http://www.botanicaplantnursery.co.uk)

Botanica, Chantry Farm Campsea Ashe, Woodbridge, Suffolk IP13 OPZ

## WILL WRITING

Affordable professional service

- Wills from £95 for a simple will or £145 for two simple mirror wills
- Codicils and lasting power of attorney
- Home, telephone or online consultations

For a no-obligation discussion call 01473 659024

Christopher Steward  
Will Writer  
[www.cswills.co.uk](http://www.cswills.co.uk)



Safe to do business with  
Code Compliant

### Providing the best quality flooring to Ipswich and Woodbridge



As a family business with over thirty years of experience, Deben Carpets & Flooring are experts in supplying and fitting the finest quality flooring and carpets across Ipswich and the local region.

Visit our showroom in Martlesham and view our large range of carpets and floor coverings, or alternatively, we can bring flooring samples directly to your house where we can also offer a home measuring service.

#### Our range of floor coverings include:

- Stainfree Carpets
- Wool Carpets
- Karndean Flooring
- Cushion Vinyl

#### We also offer:

- Free estimates
- Specialist rental carpet packages
- Free Home Consultation

Tel: 01473 626097 [www.deben carpets and flooring.co.uk](http://www.deben carpets and flooring.co.uk)

Unit N Bristol Court, Betts Avenue, Martlesham Heath Business Park, Ipswich, Suffolk IP5 3RY

[info@deben carpets and flooring.co.uk](mailto:info@deben carpets and flooring.co.uk) DebenCarpetsAndFlooring



## Nu-Life Furnishings Ltd

BLINDS • CURTAINS • UPHOLSTERY

- Window, Door & Conservatory Blinds
- Curtains, Tracks & Poles • Awnings • Shutters
- Fly Screens • Upholstery
- Foam, Loose Covers & Sundries

1000's of fabric samples to choose from  
Stockists of all leading fabric manufacturers  
Free estimates and advice

Call us today on 01728 747745

Email: [info@nu-lifefurnishings.co.uk](mailto:info@nu-lifefurnishings.co.uk)  
or visit [www.nu-lifefurnishings.co.uk](http://www.nu-lifefurnishings.co.uk)

Showroom at

17 Riverside View,  
Wickham Market IP13 0TA

### LUXAFLEX

blind shutter and awning inspiration dealer

new blind and curtain showroom  
all leading fabric manufacturers

over 400 hanging samples  
over 350 pattern books  
40 blind books to choose from

## Essex & suffolk PEST SOLUTIONS

Your local pest control experts  
for home & business

- Free advice, fast response
- Highly accredited (NPTA)
- Fully qualified & insured
- Discreet - unmarked vans

T: 01473 328092

[info@eandspestsolutions.co.uk](mailto:info@eandspestsolutions.co.uk)



## PAUL YOUNGS

EST. 2000

### WINDOW CLEANING & CARPET CLEANING

INCLUDING UPHOLSTERY & PROTECTION.  
PROCHEM CERTIFIED.

PRESSURE WASHING, PATIO & DECKING.  
ALL FRAMES AND SILLS CLEANED. WATER-FED POLE  
AND TRADITIONAL METHODS USED.  
CONSERVATORY ROOFS, FASCIAS, SOFFITS &  
GUTTERING CLEANED. GUTTERS EMPTIED.

38 DEBEN AVENUE, MARTLESHAM HEATH  
IPSWICH IP5 3QP  
MOB: 07899 895947  
HOME: 01473 613144

[youngscleaningservices@gmail.com](mailto:youngscleaningservices@gmail.com)

# Beautevas

beauty and tanning

all your beauty needs taken care of

facials  
waxing  
electrolysis  
eyelash & brow tint  
eyebrow shape  
manicure  
pedicures  
gel polish



advanced anti-ageing  
comcit facial  
sunbeds  
spray tanning  
massage  
icon ultra facelift  
specialised foot care

01473 610606

www.beautevas.co.uk (online booking available)

15 The Square Martlesham Heath Ipswich IP5 3SL



## SB Electrical

Domestic & Commercial  
Installation & Repair

Mobile: 07789 485929  
stewartbye@gmail.com

## IMAGINE PLAYING GUITAR

Getting started may be  
easier than you think.  
I specialise in beginners  
of any age with lessons  
in your own home.

Contact Mick on  
07900 225723 or email:  
mick.hutton@blackwatersunset.com

## GB Jackaman

Plumbing & Bathroom  
Specialist

Established 25 Years

All trades to complete  
your luxury bathroom.  
We can supply and fit,  
or fit only.

Free Advice and Quote:  
01473 613218  
07751 806101  
jackamang@aol.com

## ChipsAway Ipswich

Express Car Body Shop

- Bumper scuffs
- Paintwork scratches
- Minor dents
- Small accidental damage
- Alloy wheels
- Repairs fully guaranteed
- Same day service
- Convenient local bus service  
available and park and ride
- Courtesy car available  
(Subject to availability)
- Open Monday to Friday 9-5pm  
Saturday 9-1.30pm



Please call Paul Geary **01473 613352**  
or visit [www.chipsawayipswich.co.uk](http://www.chipsawayipswich.co.uk)

Unit 16, Anson Road, Martlesham Business Park,  
Martlesham Heath IP5 3RG

Funeral  
Services  
East of  
England  
COOP

Here for you  
every hour  
of every day

139 Main Road  
Kesgrave

**01473 855689**

[www.eastofengland.coop/funerals](http://www.eastofengland.coop/funerals)



# Bridge Farm Day Nursery

## OFSTED Rated Good

[www.bridgefarmdaynursery.co.uk](http://www.bridgefarmdaynursery.co.uk)



- Web cams – watch your children while they play!
- Baby, Toddler and Pre-School Room
- Nursery Grant Funding for 2-4 year olds
- Separate 24 place pre-school room
- Qualified, friendly and experienced staff

**Please call 01394 388062**

Building C2, Bridge Farm, Top Street, Martlesham, Suffolk IP12 4RB

## MARTLESHAM IN BLOOM

### Plant now for Summer Colour!

The end of May and into June, when frosts are hopefully behind us, is the time to plant out annuals for some beautiful summer colour, whether you have beds, borders, baskets, or containers. Plants help us in so many ways, they can all help through providing oxygen, absorbing pollution and of course enhancing our surroundings, and that of our neighbours and passers-by too if you add floral colour to the front of your property!

The other important beneficiary of plants are wildlife. Plants can provide homes, habitats and food for a variety of insects and other creatures. For example don't worry if the odd leaf gets munched and think twice before brushing off what you think are pesky aphids on your plants - if left they will be a very welcome meal for the local bluetits, ladybirds and lacewing larvae, to name just a few of the wildlife diners who enjoy eating them. Why not also include some pollinator friendly flowers in your summer display? These are flowers which can provide pollen and nectar for insects. If you would like some suggestions of pollinator friendly plants contact us for a list.

Why not add some extra summer colour to your garden or outside space this year? The more plants we can grow, the better it will be for us all!

We look forward to spotting summer colour around the parish!

### Martlesham Common Wildlife Survey

Do you ever walk across Martlesham Common? This is the area between the A12, Tesco, Martlesham Community Hall, Mill Heath and Main Road.

Martlesham in Bloom is continuing to compile records of the flora and fauna found on the Common. This information can help feed into Martlesham Parish Council's management plan for the site, which aims to promote the diversity of wildlife. Being an area of lowland heath and acid grassland, part of The Sandlings, means that some flora and fauna is very distinct to the area. There is also woodland and scrub, both also important to wildlife.

If you spot any interesting flora or fauna as you walk across The Common, for example birds, butterflies or flowers, please let us know, via the contact details below, and we will add your sightings to the records.

*For further information please contact:*

*martleshaminbloom@gmail.com or J Maureen Burrows (Secretary) on 01473 625196.*



## MARTLESHAM BRASS

### 'Making Music Fun in East Anglia'

Martlesham Brass happily returned to face-to-face rehearsals in May, although space constraints mean that initially the Preliminary and Intermediate bands are meeting on alternate weeks. We will continue to monitor the situation and latest guidelines to ensure all our members are kept safe at rehearsals.

At the moment, we are unable to operate a beginners band, but those already on our beginners waiting list will be offered places when circumstances permit.

If you already play a brass instrument, and would be interested in joining us, please email [join@martleshambrass.co.uk](mailto:join@martleshambrass.co.uk)

Liz Howard. (Publicity Officer)  
[e\\_m\\_howard@talk21.com](mailto:e_m_howard@talk21.com)  
01473 625617.

Registered Charity No.1100922. Visit our website [www.martleshambrass.co.uk](http://www.martleshambrass.co.uk)

## PORTAL WOODLAND CONSERVATION GROUP

Unfortunately, all events have been cancelled due to the coronavirus. However, if you would like to sign up or get in touch, we will be pleased to welcome new faces once restrictions allow.

New volunteers of all ages and abilities are always welcome. No experience needed.

For further information, please contact us at [pwcg.martlesham@gmail.com](mailto:pwcg.martlesham@gmail.com), phone: 01473 612632 or visit our website: [pwcg.onesuffolk.net](http://pwcg.onesuffolk.net) or join our members' Facebook Group by messaging Duncan Sweeting.

*Stephen Corley, Chairman*

## DEBEN ROTARY - UPDATES

### You will have read last month that we need your assistance with nominations for our Community Service Award.

We are looking for nominations of an individual or group of people who have given exceptional service to the communities of Kesgrave, Martlesham, Woodbridge or Melton in the last twelve months.

The winner will receive a £500 donation to the charity of their choice.

Just write to us at the address below (in about 250 words), explaining why your nomination is worthy of this award by the closing date of 14 June 2021, and if your nomination is shortlisted, we will be in touch with you for further details.

All nominations will be featured on our website.

Continuing on with our work in the community, we have completed refurbishing a bench we originally donated to Elmhurst Park in Woodbridge 20 years ago and is now about to be erected under the windsock in Martlesham Heath, feel free to sit on it and enjoy quiet moment.

Internationally, we are trying to support where we can and have just donated to Shelter Box, where our donation goes toward providing large plastic crates containing tents and immediate living equipment in times of disaster, which are still occurring despite the ravages of the pandemic. You may have seen on TV planes being loaded with these boxes. [www.shelterbox.org](http://www.shelterbox.org)

Golf day on 1 July 2021 at Melton Park Golf Club. This is an exciting 9-hole course which offer a great challenge and raises monire4s for our local charities. Play Teams play for the Marie Hunt Trophy and it offers a great half day of sport and fun. See our web page for details or email us directly details below.

We are now all looking forward to getting back to Face2Face meeting, but again caution and following the government's advice is vital, so Zoom for the next few weeks.

In our last meeting in April, we had an excellent speaker in Marti Lauret, an American, who lived in South Carolina in the 50s & 60s, providing us with a great insight into how race relations actually worked in that period.

On the 7 June we have local man Ian Read describing the period in Martlesham Heath

from 1917 - 2021, if you would like to join us you are more than welcome.

Are you taking part in the Orwell 25 this year? look out for some of our members who will be there?

Membership, we are looking for new members to join us, female or male, where you would like to join in our service activities and a have good companionship as were are doing it.

To contact us about The community Service Award, or joining our lectures or anything else you would like to know about us, either go to our web page: [www.debenrotary.org.uk](http://www.debenrotary.org.uk) or email us at [mail@debenrotary.org.uk](mailto:mail@debenrotary.org.uk)

*Richard Booter - President Deben Rotary*



## DAVE CHAPMAN MOT and Service Centre

**Dave Chapman**  
Formerly Of Autofit

- MOTs
- Servicing
- Tyres
- Air Conditioning
- Diagnostics
- Cambelts
- Brakes
- Batteries
- Exhausts

8 Betts Avenue Martlesham Heath Ipswich Suffolk IP5 3RH  
Tel: 01473 927927 | [www.davechapmanltd.co.uk](http://www.davechapmanltd.co.uk)

## KWMCC

KESGRAVE COMMUNITY  
& CONFERENCE CENTRE

*Situated in an excellent location, near Ipswich in the heart of Suffolk, Kesgrave Community and Conference Centre is a stone's throw from the A14 and A12 trunk roads.*

**Choice of function rooms** – suitable for business meetings, corporate events, training, exhibitions, weddings, christenings and private functions.  
The centre also boasts an indoor sports hall and extensive outdoor area which can be used for all types of sporting events and activities.

**Easy to get to and free parking**  
**Licensed bar and flexible catering options**  
**Friendly professional staff**

**Kesgrave Community and Conference Centre**  
Twelve Acre Approach, Kesgrave, Ipswich, Suffolk IP5 1JF  
Tel: 01473 612648 • [reservations@kwmcc.co.uk](mailto:reservations@kwmcc.co.uk) • [www.kwmcc.co.uk](http://www.kwmcc.co.uk)  
Registered charity number 1186279

## Barry Clamp

& sons Ltd. est 1984



Quality installation and replacement.

- Windows, Doors, Conservatories in
- UPVC, Aluminium and Hardwood
- also Fascias, Soffits and Cladding.



WHERE QUALITY COUNTS!



Call us today- **01473 623745**  
for a free no obligation quotation.. **07801 030634**

No pushy salesman,  
just honest advice from the owners.

[www.barryclampandsons.co.uk](http://www.barryclampandsons.co.uk)

51 Dobbs Lane, Kesgrave, Ipswich

be delicious!  
with  
Slimming World



## WE ARE BACK!

**Covid secure groups running in Martlesham. Booking essential.**

### TUESDAY

#### Martlesham Heath

St. Michael & All Angels Church,  
The Drift, IP5 3PL  
AFTERNOON / EVENING  
Contact Sarah on  
07825 222076

### FRIDAY

#### Martlesham

St. Michael & All Angels Church,  
The Drift, IP5 3PL  
MORNING  
Contact Lisa on  
07752 006399

### SATURDAY

#### Martlesham

Richards Room,  
Felixstowe Road, IP12 4PB  
MORNING  
Contact Lisa on  
07752 006399

[slimmingworld.co.uk](http://slimmingworld.co.uk) 0344 897 8000



MARTLESHAM  
PRIMARY ACADEMY

Ofsted  
Good  
Provider



LEARNING  
TOGETHER, CREATING  
BRIGHT FUTURES.

When you step inside our school, you will find an exciting environment of creativity and discovery.

We are really proud of our school which offers a supportive family atmosphere with an emphasis on ensuring our children are happy, confident individuals who love to come to school. Our curriculum is thematic and the children are offered a range of exceptional learning opportunities in and outside the classroom. Our learning powers are fully embedded and enable our children to be successful. If you would like to find out more about our school then please contact the office to book a visit.

#### OUR LEARNING POWERS

- Respect
- Responsibility
- Resilience
- Aspiration
- Collaboration

01473 624409 [office@martleshamacademy.org](mailto:office@martleshamacademy.org)  
[www.martleshamacademy.org](http://www.martleshamacademy.org)



HUNNABALL  
Family Funeral Services



Here **whenever** you need us  
Funerals | Memorials | Pre-paid Funeral Plans

### Hunnaball of Ipswich

420 Spring Road, Ipswich, IP4 5NE

**01473 717464**

also at Dove House, Norwich Road **01473 748808**

[www.hunnaball.co.uk](http://www.hunnaball.co.uk)

# Martlesham Climate Action

**Martlesham 'Climate Emergency Summit', Saturday, 25 September**  
**St Michaels Church, Martlesham Heath. Save the date!**

## Helping Nature as the Climate Changes

As our climate slowly but inexorably changes as a result of our greenhouse gas emissions (primarily carbon dioxide) we can all try to help nature adapt. One initiative that Martlesham Climate Action is promoting is for residents to 're-wild' some of any land they own. I for one now have 2 ponds in my garden (contact us if you need help or advice!) and it is a continual source of interest especially as it comes alive in spring. I'll never forget my first sight in early April of a caddis fly larva crawling out of the depths with its 'backpack' of pond debris. Weird! My homemade hedgehog house also has a resident and she has been busily nesting with leaves so crossing fingers for little ones soon! Easy to make out of odd bits of wood I had lying around the garage (check out designs on the internet). I have also ensured holes to exit the garden and put out dry hedgehog food (or cat food apparently is fine) and a bowl of water that she visits nightly. I have also dug up bits of lawn and planted wild flower seeds and 'weeds' from other parts of the garden and stopped mowing most of it. If you are like me, you have been brought up to think of weeds as something to get rid of and a nice uniform lawn as a thing to aspire to. It's like fashion and I hope it is changing!

Volunteers have also recently put up 4 Swift boxes on the Richards Room. These and the associated calling system to alert returning swifts of their location were funded by the Suffolk Coasts and Heaths AONB and distributed by Save Our Suffolk Swifts. If you pass them early in the morning or at teatime you may hear the calling system that will be active until the end of July and helps attract returning Swifts looking for nest sites. In particular, the younger Swifts (year 2 and 3) will then hopefully choose the boxes next year to nest (they don't nest until year 4 and then come back to the same site every year). Thanks to Jane and the team who made it all happen!

## Sunny April

Finally, if you have a solar panel + battery system, April was an excellent month. I was off grid for most of April that all helps to reduce my carbon footprint (the grid average was around 250g of carbon per unit of electricity in April). If you want to talk to someone who has these systems and how to choose an electricity (green) tariff that maximises your cost savings, contact us or make sure you come along to the climate summit on the 25th of September. You will be able to talk to residents who have real world experience of running these and advice on sizing for your house. We are also hoping to have a couple of local suppliers you can talk to.

Dave Green

Co-chair, Martlesham Climate Action (A Martlesham Parish Council working group)

Website: [www.martleshamclimateaction.onesuffolk.net](http://www.martleshamclimateaction.onesuffolk.net)

E-mail: [martleshamclimateaction@btinternet.com](mailto:martleshamclimateaction@btinternet.com)

Twitter: @martleshamclim1



## SUFFOLK WILDLIFE TRUST - WOODBRIDGE WILDLIFE GROUP

Many thanks to all those who came along and supported our "Doorstep Garden and Book Sale" on the weekend of 8th and 9th May. We raised a total of £1563 from all 15 doorsteps. I am especially grateful to those who paid a visit to the stall on the heath as our stall here raised £120 towards the total. The money raised will be used to support wildlife projects in Suffolk.

We have various walks and other events that are likely to take place over the summer. It is best to access the Suffolk Wildlife Trust website for the most up to date information or you may receive an e-mail about local events if you are already one of our members.

Phil Smith 01473 625630

## Woodbridge and District Lions Club in Desperate Need of Premises for an Art Shop

Like so many community service organisations Woodbridge Lions Club has seen its resources significantly depleted during the COVID crisis.

Community events have not been happening and the Club has not been able to raise funds to help those in need. However, following the easing of COVID restrictions the Club is now able to look to the future and we plan to open an Art shop in The Thoroughfare, Woodbridge.

So, we are looking for a landlord or property agent who is prepared to 'sponsor' our project by permitting Woodbridge Lions Club to use their retail unit for a short period. The shop will be run by members and friends of the Club selling paintings very kindly donated by Kesgrave Art Group.

*If you want the opportunity to help Woodbridge Lions Club to help your community, please contact Mike Curtis on 07759569204 or email [curtis122@btinternet.com](mailto:curtis122@btinternet.com)*

## POST WAR RESEARCH AND DEVELOPMENT AT MARTLESHAM

**In previous issues of Martlesham Monthly I have written about life at Martlesham in the days when it was an important research and development airfield and last month some of what happened here during WW2.**

**After the end of hostilities, in 1945, RAF Martlesham returned once again to research and development, but not on a scale seen between the wars.**

The first units to be established was that of the Blind Landing Experimental Unit and the Bomb Ballistics Unit. The Blind Landing Experimental Unit (BLEU) was formed on the 1 October 1945 at Woodbridge as an outstation of the Royal Aircraft Establishment at Farnborough, moving to Martlesham Heath in July 1946 and continued to use Woodbridge as a satellite intermittently. It was disbanded into the Bomb Ballistic and Blind Landing Experimental Establishment on 1 November 1949 and eventually became the Armament and Instrument Experimental Unit (AIEU) 1st May 1950.

The BLEU was formed to develop a method of landing aircraft in foggy and bad weather conditions. Conditions which caused the loss of many aircraft during wartime when returning to base from operations in deteriorating conditions, especially at night. Its work was also seen as essential for the operation of V Bombers at any time irrespective of the weather conditions. The DH Devon (*pictured top right*) was landed by the pilot from the blacked out passenger cabin. To this end the unit was charged with the development of automatic approach and landing in these conditions. Many experimental landing approaches and landings were made at Woodbridge because of its lengthy and wide runway and unrestricted approach with only Orfordness Lighthouse to cause distortion to the radio beam used for the approach.

RAF Woodbridge was laid down during WW2 primarily for emergency landing and the Bomb Ballistics Unit often flew from Woodbridge. Their target for the experimental work entailing bomb trajectories was Orfordness island. The Bomb Ballistics Unit initially used four Avro



Pictures: Above—The DH Devon  
Below—The Avro Lynch

Lincoln bombers, (a development of the Avro Lancaster). This was the dawn of the jet age and the Avro Lincoln (right), was fitted with two turbo-prop engines in place of two of the standard Rolls Royce Merlins. Another of the Lincolns was fitted with two RR Avon pure jets in place of the two inboard Merlins.



The photo at the bottom of the page was taken of one of the Avro Lincolns of the Bomb Ballistic Unit. Below that a Vickers Varsity of the Blind Landing Experimental Unit (BLEU) and the De Havilland Devon of the BLEU. The bottom two aircraft consisted of the night fighter version of the Armstrong Whitworth Meteor and a Gloster Meteor.

RAF Fighter Command had requested the urgent development of a system of rapid landing. Consequently a Rapid Landing experimental development Flight was formed at Martlesham. The two Meteors were based here for that reason.

The Armament and Instrument Experimental Unit, consisting of the Blind Landing Experimental Unit, the Bomb Ballistics Unit and the Rapid Landing Experimental unit were moved to the Royal Aircraft Establishment outstation at Thurleigh Bedfordshire in 1957.

An Air Sea Rescue Helicopter Flight moved to Martlesham and the Battle of Britain Memorial Flight was based here from 1958 to 1961. A gliding school used the airfield until it was finally decommissioned on 25th April 1963. The Land was sold to the Bradford Property Trust for £72,500.

*Alan Powell*





T: 07934 384 501 ■ E: ginkgotreesurgery@hotmail.co.uk  
www.ginkgotreesurgery.co.uk



## ALL ASPECTS OF TREE SURGERY

Crown reductions, fruit tree pruning, crown thinning, crown lifting, dead wood removal, hazard tree removal, coppicing, pollarding, hedge cutting, re-planting, site clearance, wood chipper & operator hire, stump grinding or eco plugging, timber milling, fire wood processing, fire wood, wood chip supplied on request.

*Fully qualified and insured  
£5 million public liability insurance  
All waste removed from site  
24 hour emergency call out*

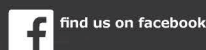
**Please call us for professional advice  
and a free quote.**



## Andrew Westaway

BESPOKE HOME DEVELOPMENTS  
BATHROOM INSTALLATIONS

Mob: 07596 342911  
Email: andywestaway1@hotmail.co.uk



**BOILERS • REPAIRS • SERVICING**  
Local experts in central heating repair and maintenance  
Specialist knowledge of Vaillant & Glow Worm products  
*Emergency call outs available*

07552 778931  
heat-tech21@icloud.com



**PJ PRINT**  
LITHO & DIGITAL PRINT

Everything you're  
looking for  
in a Printer



PJ Print (East Anglia) Ltd, 16 The Quadrangle Centre, The Drift, Nacton Road, Ipswich IP3 9QR  
Tel: 01473 276010 Email: info@pjprint.com Web: www.pjprint.com

## Birchwood Primary School

At our last OFSTED inspection, the inspection team judged every area possible to be Outstanding. This follows over a decade of staff diligence and commitment in shaping and refining our curriculum offer:

"Pupils are taught a highly stimulating curriculum which is both broad and balanced. They have many and varied opportunities to study and hone their skills. The learning environment in lessons enables pupils to thrive and develop into self assured, confident individuals. Pupils have exceptionally positive attitudes to learning. They take huge pride in their work and are keen to show their successes both inside and outside of school" (OFSTED October 2016).

- Outcomes for pupils are excellent. Pupils enter the school in Reception with broadly average achievement. As a result of the outstanding Quality of Education, pupils exit Birchwood with achievement above that of their peers nationally. Often, significantly above in terms of both progress and attainment. Impact is far greater than simply test results. Birchwood is one of only 2 school DEFRA approved egg production units in the UK! The children record daily egg production, label and market the eggs, produce weekly spreadsheets on profit v outgoings, order food and materials and care for the flock. This gives them first hand business 'life experience,' before transferring to Secondary school.

- We offer an extensive range of additional clubs, activities and support and extension programmes for children to participate in and our staff team constantly research and embrace new initiatives.

Our vision statement underpins all that we do.

"Passionate about learning."

If you would like to find out more about our school or arrange a visit, please contact the office

Valiant Road, Martlesham Heath, Ipswich, IP5 3SP

Telephone (01473) 610701

Email admin@birchwood.suffolk.sch.uk

Website www.birchwoodprimary.co.uk



## KESGRAVE LIBRARY NEWS

Have you read everything on your 'To Read' shelf and are now desperate for something new? Kesgrave Library is open for customers to come in and choose books for themselves.

However, we understand that some customers may be feeling nervous about returning to browsing, so we will be continuing to run our Select and Collect service alongside the re-introduction of opening the library space. If you would like to continue to use this service, please ring us to arrange a time/date for collection of your requests.

**Select & Collect** - This service is open to any age group and has proved very popular. Staff select a variety of books for customers, based on the information you give us about the types of books and authors that you like to read. Staff can also reserve in any items for you if they are not available at Kesgrave.

Our opening hours are: -  
Monday 10.00 - 1.00 p.m.  
Tuesday 10.00 - 1.00 p.m./2.00 - 5.00 p.m.  
Wednesday 2.00 - 5.00 p.m.  
Thursday 2.00 - 5.00 p.m.  
Friday 10.00 - 1.00 p.m./2.00 - 5.00 p.m.  
Saturday 10.00 - 1.00 p.m.  
SUNDAY CLOSED

**Track & Trace** - all customers who come into the library will be asked to either complete a Track & Trace form or to scan the library's QR code on their phone, to log that they have been on site. All completed track and trace forms will be kept safely and destroyed after 21 days, if we are not contacted to say a customer has tested positive.

**Face Masks** - Please can we remind customers that it is a mandatory requirement (unless exempt), that they wear a face mask which covers their nose and mouth when collecting their requests or coming into the library. Thank you for your understanding.

**Covid -19 Self-Test (Rapid Antigen Tests)** - The library is a collection point for these tests. Please just pop along and ask staff for however many boxes you or your family require.

**Facebook/Instagram** - Staff will also continue to post information and activities on the Kesgrave Library Facebook page and Instagram account. Please 'Like' and 'Follow' our posts for up-to-date information.

**Word Play Sessions** - These sessions returned on Wednesday 19th May at the Kesgrave Community Centre. Due to the Covid restrictions, we have reduced capacity until guidelines change. To attend, you will need to ring the library to book a place. Tot Rock is 9.45 - 10.15 a.m. and Baby Bounce 10.45 - 11.15 a.m. Guidance on the requirements for the sessions will be explained when you book.

We look forward to seeing you all very soon. Thank you for all your support.

## WOODBIDGE LIBRARY IS NOW OPEN ON MONDAYS AND SUNDAYS AGAIN!

Our opening hours are 10am-4pm on Mondays, 9.30am to 5pm on Tuesdays, 9am to 5pm Wednesdays to Saturdays and 10am-1pm on Sundays.

A limited number of people are now allowed inside the Library to browse; the computers are available (pre-booking is essential) as are the printing and photocopying services. The staff will do the browsing for you if you wish: the Select & Collect service is still in operation and, of course, you can still reserve books online yourself.

All these arrangements are contingent on the government's plans going ahead as scheduled. You can always get the latest information at <https://www.suffolklibraries.co.uk/coronavirus>

Items can be returned to Woodbridge Library outside opening hours via the book drop box. To contact the library, phone 01394 330855 or send an email to [woodbridge.library@suffolklibraries.co.uk](mailto:woodbridge.library@suffolklibraries.co.uk)

There is a sale of withdrawn books in the Library foyer. Adult fiction is available at 30p per book or four for £1; non-fiction books are priced individually; junior books are 20p each. These are real bargains!

Also please note that we now have supplies of Covid-19 Self-Test kits that you can collect from the library.

### **Realise Futures walk in advice and guidance sessions for people with a learning disability and/or autism**

Advice, guidance and information can be given on housing, benefits, money, employment, training, health, etc. Come along to Woodbridge Library on the first Tuesday of every month from 10am-12 noon (appointment only). For more information phone 07753447607 or email [info@realisefutures.org](mailto:info@realisefutures.org)

### **Online musical performances**

The FOWL Events Group invites you to get back into the mood for live events in the Library (beginning again, we hope, in September) by watching and listening to two online performances.

Harpist Zoe Anderton has compiled a delightful, 15-minute recital especially for FOWL. And composer and teacher. Jan and Nigel invite you to tune in to a half-hour programme of dance music down the ages. Go to [www.youtube.com/watch?v=nONkJO4yQfk](https://www.youtube.com/watch?v=nONkJO4yQfk).

---

## **SPEAK EASY MARTLESHAM**

Speak Easy is part of Toastmasters International, and we offer public speaking opportunities. We provide a fun and supportive forum to speak, and to evaluate.

We hope to be returning to the Richard's Room in Martlesham very soon, but for now we are finding our online Zoom format really effective. It also enables us to include guests from further afield - giving us the opportunity to be even more inclusive!

In recent meetings we have welcomed guests from around Europe, India and America, as well as more widely across our region. It really is an interesting time to join us!

Guests are welcome to join Speak Easy to see what we have to offer, and to take part if you would like. We hope you will choose to become a member, whether to beat public speaking nerves, develop your abilities, enter competitions, or help us run the club!

Speak Easy meetings are held on alternate Thursdays. Our next meetings are 27th May, 10th June and 24th June

Join at 7:00pm for a 7:15pm start and finishing at 9:30pm

Speak Easy is an inclusive and diverse group, open to anyone 18 years or over.

If you would like any further information, or to attend one of our online meetings please contact Adam Green:

Adam Green: [vppr@speak-easy.org.uk](mailto:vppr@speak-easy.org.uk)  
or [www.speak-easy.org.uk](http://www.speak-easy.org.uk)

or find us on Facebook: Speak Easy Martlesham



## MARTLESHAM LADIES CLUB

**Summer is nearly here, and with the relaxing of lockdown restrictions we are making tentative plans for reopening the Ladies Club.**

There will be a meeting on Thursday 1st July 2021 at 2 30pm in the Richards Room.

All old and any new members will be very welcome to come and discuss future plans for the club. It will be wonderful to meet face to face again and catch up. Please bring your own tea and biscuits!

If all goes to plan we hope to hold our first meeting in the Richards Room on Thursday 9th September at 2 30pm

*For more information please contact Doreen Boar 01473 622768.*

I'm a huge fan of Marvel films and it has been great over the past months to watch all of the MCU films in timeline order with my son. Having seen most of them as they were released and been hugely confused, this cleared up a lot of my questions.

The latest series I watched was 'The Falcon and The Winter Soldier' where the world is battling a group called the Flag Snatchers. These are either a terrorist group or freedom fighters, depending on whose side you are on. Their slogan is designed to unite people; One World, One People. Sadly, as with so many other movements designed to unite, they also exclude.

Their message though has merit – and indeed has been said before. Standing up to the culture of the day that promoted exclusion, Jesus spoke of, and lived, a message of God's love for all; he was happy to associate with those society looked down on – children, women, the sick, those from other nations. And whilst his followers haven't always got it right, this message of love and acceptance for all is still at the heart of Christian teaching.

The apostle Paul, writing at the end of the first century to the Colossian church said this to promote unity:

It doesn't matter if you are a Greek or a Jew, or if you are circumcised or not. You may even be a barbarian or a Scythian, and you may be a slave or a free person. Yet Christ is all that matters, and he lives in all of us. (Colossians 3:11)

How might you show this to those around you this month?

Revd. Toby Tate  
toby@martleshamcofe.org.uk



Martlesham Benefice

## Thank you to everyone who supported our Christian Aid Week appeal last month.

We had a great fun quiz, expertly led by Toby Tate, and all who joined in online had a good laugh even when some of the questions had us all scratching our heads! Congratulations to Andy and Brenda on their winning score and many thanks to everyone who contributed a round of questions, and to all who made a donation.

Raising funds for supporting the work of Christian Aid amongst the poorest communities in the world has been a challenge this year. The poorest are suffering the most from the combined effects of climate change and the Coronavirus pandemic so more funds are needed, but this year our usual house to house collection has not been possible. So thank you to everyone who has made a donation online, via our benefice e-envelope, and in other ways. So far we have raised just over £1,500, which is a marvellous total.

It is not too late to make a donation. Give online via our e-envelope link at <https://envelope.christianaid.org.uk/envelope/martlesham-benefice> or give over the phone by calling 08080 006 006. Making a donation is a wonderful way of sharing love with our vulnerable neighbours living in poverty.

On behalf of the poor and vulnerable people of the world, thank you. *Carolyn Smith*

### MARTLESHAM COMMUNITY HALL AND RICHARDS ROOM

**You can find out about our venues  
at our website—[mhall.org.uk](http://mhall.org.uk).**

You can check hire rates, if they're available and make an online booking request.

Alternatively you can call our Booking Secretary on 01473 623203.

If leaving a message, please speak slowly and repeat your telephone number.

### THE MARTLESHAM HEATH PAVILION

Martlesham Heath Pavilion is a great location for children's parties at the weekend.

You can check availability and book the Pavilion online at:

**[martlesham.org.uk/pavilion](http://martlesham.org.uk/pavilion)**

Alternatively, please contact the booking secretary:

**email: [bookingsecmhp@gmail.com](mailto:bookingsecmhp@gmail.com)  
phone: 07732 199712**

### MARTLESHAM VILLAGE HALL TOP STREET

Although we have regular bookings for evenings throughout the year, morning and afternoon sessions are available.

The hall is ideal for small groups who need to meet at a reasonable cost, discount for residents of Martlesham.

*For any queries or bookings please  
contact 01473 623655.*

Building  
God's  
Family  
Together

## THE CHURCH IN MARTLESHAM & BRIGHTWELL

**RECTOR:** The Revd Toby Tate The Rectory, 17 Lark Rise, Martlesham Heath  
Church phone 01473 612659 (rest day Friday)

**ASSOCIATE MINISTER:** The Revd Margaret Rittman Woodlea, The Street, Martlesham  
07914 771061 (working days: Sunday, Wednesday, Thursday)

**CURATE:** The Revd Christine Pinder 3 Mayfields, Martlesham Heath  
07555 748345 (working days: Sunday, Wednesday, Thursday)

**READERS:** Carolyn Smith 74 Heathfield, Martlesham Heath  
Malcolm Rittman Woodlea, The Street, Martlesham

**ELDERS:** Janet Foster janetwf33@gmail.com  
Margaret Rollins 9 Angela Close, Martlesham 01473 623868  
Simon Smith 11 Squires Lane, Martlesham Heath 01473 612410 (evening only)  
Liz Welham 23 Deben Avenue, Martlesham Heath 01473 622709  
Lynn Wilder Kenton, Nr Debenham 01728 860627

| Services for the Month  | Martlesham Heath St Michael's<br>Martlesham St Mary's<br>Brightwell St John's | Online<br>on Facebook and YouTube. Search<br>for 'Martlesham Benefice' |
|-------------------------|---|--|
| <b>Sunday 6th June</b>  | St Michael's 10am Holy Communion<br>with Junior Church                        | 10am All Age Holy Communion<br>5pm Zoom After Hours                    |
| <b>Sunday 13th June</b> | St Michael's 10am Morning Worship   | 10am Morning Worship<br>6.30pm Evening Worship                         |
| <b>Sunday 20th June</b> | St Michael's 10am Holy Communion Service                                      | 10am Holy Communion<br>7pm Zoom Reflecting with God                    |
| <b>Sunday 27th June</b> | St Michael's 10am Morning Worship   | 10am Morning Worship<br>6.30pm Evening Worship                         |

**A warm welcome awaits you at all our services in our church buildings and online.  
It would be helpful if you could contact Toby by the Saturday before for Zoom codes.  
In the event of changes to Covid-19 restrictions find up to date service information on our Facebook page.**

### Midweek Services

Weekly: Wednesday 10am Morning Prayer on Facebook and YouTube

**Prayer Diary** Please include the following as an addition to your daily prayers:

June

- |  |   |
|--|---|
| 5 Give thanks for the Runway Café<br>and pray for all who use it                       | 20 Fathers' Day: give thanks for their contribution to family<br>life |
| 6 Give thanks for the freedom to worship   | 21 Give thanks for new opportunities opening up                       |
| 7 For students graduating facing uncertain futures                                     | 22 Give thanks for the beauty of the countryside                      |
| 8 For the Mobile Library: give thanks for the joy of reading                           | 23 For the residents of Chandos Court                                 |
| 9 For the residents of Carlford Close  | 24 St John the Baptist: for his humility in putting Jesus first       |
| 10 For the Queen on what would have been Prince Philip's<br>100 <sup>th</sup> birthday | 25 Give thanks for the skills and adaptability of teachers            |
| 11 St Barnabas: that we may be good encouragers  | 26 Give thanks for leisure time                                       |
| 12 For those persecuted for their faith  | 27 For those being ordained at Petertide                              |
| 13 For all who use the Pop Up Shop   | 28 That we make the most of meeting face to face                      |
| 14 For people awaiting operations or treatment   | 29 For peace and the end to warfare worldwide                         |
| 15 Give thanks for all carers  | 30 For the residents of Chandos Drive                                 |
| 16 For the residents of Carol Avenue   | July  |
| 17 For those seeking employment  | 1 For encouragement for school leavers                                |
| 18 For the many nations waiting for vaccinations                                       | 2 For all who work for the NHS  |
| 19 For comfort for all those bereaved in the past year                                 | 3 St Thomas: for all who seek faith                                   |
|  | 4 USA Independence Day: for peace and harmony                         |



**Jemma Burgess**  
BA (Hons) MCFHP MAFHP

For all foot health care needs in the comfort of your own home.  
I look forward to making your feet twinkle!  
Fully insured 18110101 and CRB cleared.

Contact me on:  
**07522 579047** or  
**(01473) 612911**  
<https://jemmaburgess10475.wixsite.com/twinklestoos>



**CARPET THERAPY**

**Carpet & Upholstery Cleaning Service**  
as recommended by the Leiston & Woodbridge Carpet Company and Halesworth & Saxmundham Carpet Centres

**Tel: 01728 830927**  
**07793 227038**  
**FOR A FREE QUOTE**

Carpet & Upholstery Protection available

Cleaning Locally for over 14 years

## Fraser-Hann Financial Services Ltd.

Need pension or investment advice?  
We have been offering friendly, local, professional and independent financial planning advice for over 20 years.

Fraser-Hann Financial Services Limited  
12 Holly End, Martlesham Heath, Ipswich IP5 3UW  
Authorised and Regulated by the Financial Conduct Authority

**Tel: 01473 620530**  
**E-mail: chris.hann12@hotmail.com**  
**Web: www.fraser-hann.co.uk**

## ONE STOP MOT & SERVICE CENTRE

### FREE COLLECTION & DELIVERY

- Servicing & Repairs
- Brakes & Clutches
- Tyres & Exhausts
- Motorhome Repair Specialist
- Shock Absorbers – Welding Work
- Wheel Alignment & Balancing
- Full Diagnostic Service
- MoTs While-U-Wait
- Online MoT Booking Service
- Car Air Conditioning

## Kesgrave Tyre & Exhaust Centre

MasterCard **223 Foxhall Road, Ipswich** VISA  
[www.kesgravetyres.co.uk](http://www.kesgravetyres.co.uk)

**IPSWICH 01473 710720**



## Specialist Tree Services

**FREE QUOTE!**

- Tree Surgery
- Section Dismantling
- Tree Felling
- Hedge & Shrub Pruning
- Tree Planting
- Stump Grinding
- Firewood



## DMonkey Computers



Microsoft Certified Professional Systems Engineer

- Upgrades / Repairs / Diagnostics
- Laptops / Desktops / Printers
- Windows speed-up
- Virus / Spyware removal
- Wireless setup
- Networking
- Data recovery
- Security
- Broadband tune-up
- Helpful advice
- Home/site visit - or return to base
- Tuition
- VHS to DVD conversion

Daytime Evenings Weekends

Also \*\*\* Website Design and Hosting \*\*\*

Call: 01473 610440 or 07521 731578  
email: support@dmonkey.co.uk web: www.dmonkey.co.uk

FRIENDLY PROFESSIONAL ADVICE & FULLY INSURED

## The Tree GP

THE TREE SPECIALIST

**Tel: 01473 232626**  
**Mob: 07917 725445**

email: bednchri2@yahoo.com  
N.P.T.C. Qualified





Family Run Business  
Established for over 35 years  
Free Surveys & Quotations  
No Job too small



Unit 20A, Seven Acres, Newbourne Road, Martlesham IP12 4PR

**BOOTH (TARMACADAM)  
LIMITED  
SURFACING  
CONTRACTORS**

**DRIVES – FOOTPATHS  
CAR PARKS  
GROUNDWORKS  
TENNIS COURTS  
BLOCK PAVING**

[www.boothtarmacadam.co.uk](http://www.boothtarmacadam.co.uk)

**Ipswich 01473 811757  
Fax: 01473 811756**



**J. T. WILDING LTD.**

**YOUR LOCAL  
HEATING, GAS, OIL, ELECTRIC & PLUMBING  
ENGINEERS**

Boiler Replacement and Installation  
Modifications, Maintenance and Servicing  
24 hour Emergency Service (for regular customers)  
Fixed Price Gas and Oil Servicing



**01473 611 744**

[jtwilding.co.uk](http://jtwilding.co.uk)

28 Anson Road, Martlesham Heath IP5 3RG



**Hairdressing**

by

*Carolyn*



*Professional hair-care at competitive prices  
in the comfort of your own home.*

**Tel: (01473) 287542 - Mob: 07710 432813**

**THE LANDSCAPE CENTRE**

**We supply all bagged and  
loose materials from  
half a ton to 20 ton**

- Bagged & Loose Aggregates
- Paving Slabs/Nature Stone & Concrete
- Block Paving
- Garden Ornament & Water Features
- Distortive Stones & Rockery
- Fencing Wood & Concrete
- Decking
- Winter Fuel Coal/Logs



**B&M CONCRETE – THE LANDSCAPE CENTRE, BACK RD., KIRTON IP10 0QQ  
01394 448556 • [www.bmconcrete.co.uk](http://www.bmconcrete.co.uk) • email: [bmconcrete@btconnect.com](mailto:bmconcrete@btconnect.com)**



**FARTHING  
FUNERAL SERVICE**

Local expertise since 1840 from dedicated family funeral directors.

We are here to guide you through every aspect of your farewell. With our experience, compassion and attention to detail, you can depend on us.

650, Woodbridge Road  
Ipswich 01473 272711 [www.farthingfunerals.co.uk](http://www.farthingfunerals.co.uk)

**BARKER GOTELEE  
SOLICITORS**

Life | Land | Business

Call **01473 611211**  
[barkergotelee.co.uk](http://barkergotelee.co.uk)

41 Barrack Sq, Martlesham IP5 3RF  
Free parking

**We all need legal  
services from time  
to time**

Our friendly and approachable local solicitors can help with a host of legal matters.

- Accident claims
- Family breakdowns
- Buying or selling property and land
- Insolvency and debt recovery
- Developing your business
- Making a will
- Dispute resolution
- Powers of attorney
- Employment
- Trusts and tax

**J.W. MILLER**

*PAINTING & DECORATING*

**YOUR LOCAL DECORATOR  
FOR MARTLESHAM HEATH**

**TELEPHONE: 01473 626728  
MOBILE: 07888 699306**

