

# martlesham monthly

AUGUST 2018

Produced and Distributed by Volunteers



**BUTCHERS**  
**Duncans**  
**& BAKERY**

16-18 The Square

Your independent Supplier of Local  
British Meat and Handcrafted,  
Delicious Bread and Cakes

Opening Hours:  
Mon-Fri 8.00-5.00  
Sat 8.00-2.00

Butchers now open on Mondays

Credit and Debit card  
facility available

Tel: BAKERY 626828  
BUTCHERS 626044

**rdp**  
approachable accountants  
[www.rdpaccountants.co.uk](http://www.rdpaccountants.co.uk)

01473 612299  
6 The Square, Martlesham Heath

Regulated by  
**ACCA** Think Ahead

**xero** CERTIFIED ADVISOR

*The*  
**Janet-Sarah**  
*Hair Design*  
*Centre*

17 THE SQUARE, MARTLESHAM HEATH.  
PROFESSIONAL SALON FOR LATEST  
FASHION IN STYLING AND COLOURS.

TEL: 01473 624001

**Martlesham Body Repair Centre** Est. 2000  
**Your Local Paint & Accident Repair Specialists**

- All Major & Minor Accident Repairs (*all vehicles*)
- Body Skirts, Paint Chips, Scuffs & Dents
- Alloy Wheel Refurbishment
- Volkswagen, Audi, Mercedes & Porsche Trained
- Quality Workmanship at Competitive Prices
- Insurance Recognised
- Courtesy Cars (*subject to availability*)
- Rear Parking Sensors – Supply & Fit

**Martlesham Car Sales** Est. 2007  
**Stocking Used Cars at Affordable Prices**

Call in today for a free estimate ... or to see our cars for sale ...  
Unit 19, Martlesham Creek Industrial Estate, Sandy Lane,  
Martlesham, Woodbridge, Suffolk, IP12 4SD  
Telephone: 01394 388799

**MARTLESHAM HEATH  
PAVILION**

Village Hall for hire with

- Accessible facilities
- Air-conditioning
- Audio-visual equipment
- Small kitchen
- Sports changing room

*Ideal for*  
*Children's Parties*  
*Meetings, Clubs and Societies*

**Check availability and  
book online at**

[www.martlesham.org.uk/pavilion](http://www.martlesham.org.uk/pavilion)  
or email:  
[bookingsecmhp@gmail.com](mailto:bookingsecmhp@gmail.com)  
© 07732 199712

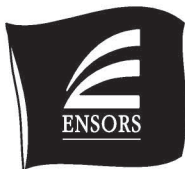
## P.A. LAST

HOME & GARDEN  
MAINTENANCE

PATIOS, FENCING, PATHS,  
GARDEN CLEARANCE,  
SHED BASES, TURF LAID,  
RE-POINTING, PAINTING

IPSWICH 287542  
MOBILE 07742015384  
PAUL40LAST@GMAIL.COM

FREE ESTIMATES



Your local  
chartered  
accountants

Call David Chittock  
01473 220022

Email: david.chittock@ensors.co.uk  
www.ensors.co.uk

Making you more than just a number

## Keep Fit

Gentle Workout

Get  
Active



Stay  
Fit

Improve

• Strength • Stamina • Suppleness

Daytime Classes in

Bromeswell, Felixstowe, Hacheston, Henley,  
Ipswich, Kesgrave & Martlesham Heath

01473 620511

## Sandlings Electrical Services

For all electrical work  
in your home

- ♦ Replacement consumer units
- ♦ New sockets and light fittings
- ♦ Outdoor security lighting
- ♦ Inspections & Landlord certificates

Part P registered, fully insured  
Call for free quote

01728 752005 or 07519 106795



## MARTLESHAM LEISURE

### CLUB FACILITIES

- Eight Squash Courts • Gymnasium
- Swimming Pool • Steam Room
- Spa • Exercise Classes • Sunbeds
- Saunas • Full Time Pro Squash Coach
- Beautician • Crèche Service
- Sports Shop • Functions Room
- Lounge Bar • Restaurant



GLOSTER ROAD MARTLESHAM HEATH IPSWICH IP5 3RJ  
TEL: 01473 624707 • FAX: 01473 623701  
email: david@martleshamleisure.co.uk  
web site: www.martleshamleisure.co.uk

## Hunnaball of Ipswich

Family Funeral Service



The personal caring approach from  
Lady Funeral Directors

Dove House  
291 Norwich Road  
Ipswich  
IP1 4BP

01473 748808

01394 648099

www.hunnaball.co.uk

Hunnaball Family Funeral Group

## EmbroiderBerry

Embroidery, Direct to garment printing  
and clothing suppliers for:

- **Workwear** • **Eventwear**
- **Schoolwear** • **Teamwear**
- **Childrenswear** • **Sportswear**

Danielle Berry 07543934939  
embroider.berry@outlook.com

## Ooh! Sore Feet?

Mr. C. Offord MAFHP MCFHP

in partnership with Dawn Kaylor MAFHP MCFHP

**Fully Qualified Visiting Foot Health Professionals**

**treating** Corns, Calluses, The Diabetic Foot,  
Ingrown Nails, Thickening Nails, Verruca treatment etc

**All in the comfort of your own home**

Reasonable Rates

**ALL AREAS COVERED**

Tel: 01473 720655

Mob: Dawn Kaylor 0776 7455073

Mob: C. Offord 0794 7971270

Mob: Hollie Offord MAFHP MCFHP 07850 170725

## MARTLESHAM SERVICE CENTRE LTD

- ✧ Servicing and repairs to all makes and models of motor vehicle.
- ✧ Competitive rates on tyres, clutches, brakes etc.

 MOT TESTING STATION

MONDAY-FRIDAY 8AM-5.30PM

UNIT 20 BETTS AVENUE  
MARTLESHAM HEATH • 01473 631111

## A bright start at Martlesham Nursery

Looking for a local nursery?  
We'd love to show you around.  
Meet our qualified staff, take  
a look at our play rooms and  
gardens, and find out how we  
can fit in with your needs and  
look after your child.

Give us a call on 01473 611881.

**Rhymes Nursery**  
**Martlesham**

www.rhymesnursery.com

Ofsted 'Good'  
August 2016



# martlesham monthly

**AUGUST 2018**

**Produced and Distributed by Volunteers**

## **THIS MONTH'S PHOTOGRAPH - MARTLESHAM BOWLS CLUB 90TH BIRTHDAY**

The picture on the front cover shows Martlesham Bowls Club celebrating the 90th anniversary of the formation of their club.

The photo shoot was followed by a Drive competition which was won by Brian Last, second place by Peter Gorham and third Trevor Gent-Gall.

Afterwards members enjoyed a buffet tea to round of a very pleasant afternoon in the sunshine.

### **GIRLGUIDING MARTLESHAM**

Currently we have

One Rainbow Unit (ages 5-7), Four Brownie Packs (ages 7-10), Two Guide Companies (ages 10-14) and One Ranger Unit (ages 14-18) meeting around the Parish.

If you are interested in joining as a member or helping as a volunteer, please contact  
chris.s.cooper@btinternet.com  
(Martlesham) or  
[www.girlguiding.org.uk/interested](http://www.girlguiding.org.uk/interested)  
(HQ).

Come join the fun & start your Guiding adventure today!

### **1ST MARTLESHAM SCOUTS**

For all enquiries regarding joining the groups please contact Timandra Howell  
[martleshamscouts.thowell@yahoo.com](mailto:martleshamscouts.thowell@yahoo.com).

Becoming a helper or hiring of the Scout HQ please contact  
Rachel Pennick 01473 610437

### **MOBILE LIBRARY TIMES**

**Tuesdays** Angela Close: 1.35–1.50pm  
Redwold Close: 1.55–2.10pm  
Falcon Mobile Home Park: 2.20–2.50pm  
Douglas Bader: 3.00–4.30pm  
7 August, 4 September, 2 October, 30 October,

#### **Thursdays:**

Douglas Bader: 10.15–11.45am  
23 August, 20 September, 18 October,

### **COMMUNITY RESPONDERS**

Martlesham Community Responders are a group of 3 volunteers (funded entirely by donations) who are trained to provide first aid and resuscitation skills. We provide a first response to many 999 calls received by the East of England Ambulance Service Trust within Martlesham, Martlesham Heath, Waldringfield, Newbourne and Brightwell, in support of and until the arrival of an emergency ambulance.

For further details contact Johnny Dixon  
01473 622160  
([johnny.dixon@btinternet.com](mailto:johnny.dixon@btinternet.com))

### **POLICE**

In case of emergencies please always call 999.

In non-emergency situations call the new number 101.

E-mail: the Safer Neighbourhood Team  
[Woodbridge.snt@suffolk.pnn.police.uk](mailto:Woodbridge.snt@suffolk.pnn.police.uk)

**Editor: Gwynneth Johnson**

#### **Advertising:**

Paul Firman (01473 622874)

[martleshamadverts@gmail.com](mailto:martleshamadverts@gmail.com)

#### **Leaflets:**

[martleshamleaflets@talktalk.net](mailto:martleshamleaflets@talktalk.net)

#### **Collation and Assembly:**

Ken Davies (01473 611109)

#### **Distribution:**

Rob Webb (01473 625786)

***Latest copy date is the  
12th of the preceding  
month.***

Please e-mail contributions to :

[martmonthly@btinternet.com](mailto:martmonthly@btinternet.com)

Or deliver your copy to

19 Farriers Close IPSWICH

IP5 3SN, preferably word processed.

In order to standardise the publication of telephone numbers, all contributors are asked to include their STD code with their telephone number. Contributors are also requested to limit their articles to approximately 250 words.

#### **DISCLAIMER**

The views expressed in the Martlesham Monthly are those of the contributors and are not necessarily supported by the editor.

### **MARTLESHAM MONTHLY ONLINE**

[www.martlesham.org.uk](http://www.martlesham.org.uk)

# MARTLESHAM PARISH COUNCIL

## Chairman's Report 2017/2018

Please find enclosed in this newsletter a copy of our Chairman's report on our activities for the year 2017/18.

## Councillor Vacancies

The Council regrets that Howard Woldsmith ceased to be a councillor in early July.

We thank him for his input whilst on the Council & wish him well for the future.

This means that we now have openings for two councillors who can be co-opted until the next election in May 2019.

This will give you an opportunity to experience what it is like to be a councillor before deciding whether to stand for election. We currently have no-one representing the areas around *Mill Heath, the Falcon Residential Park, Black Tiles Lane, Viking Heights & Seckford Hall Road.*

We need people with different backgrounds, skills and experience to represent the community and help improve the quality of life in the parish. You don't need specific knowledge or expertise to be a councillor, just a desire to look after your community. Training is provided.

Eligible candidates can be considered by the Council at its full Council meetings on the first Wednesday of each month at 7.30pm, in the Parish Room, Felixstowe Road IP12 4PB (NB There is no full Council meeting in August).

Please contact the Parish Clerk for further information or an informal chat.

## Grants to local organisations in 2019

The Parish Council will be considering all applications for grants from local organisations in the autumn. If your group wishes to apply for a grant, please contact the Clerk for an application form, to be completed and returned to the Parish Council by Monday 08 October 2018. These grants are awarded for the financial year 2019/20 and will be presented at the Annual Parish Meeting in April 2019. Any group with a project requiring Parish Council support/funding should also submit their project details and business plan by 08 October 2018 at the latest.

## Suffolk Coastal District Council (SCDC) - Public consultation on the First Draft Local Plan

This consultation runs from 20th July to 14th September 2018. SCDC says "The First Draft Plan details planning policies for the district alongside site allocations for a variety of uses which will positively support the healthy and successful communities across Suffolk Coastal." As part of the process SCDC has arranged a series of drop in sessions for anybody who wishes to find out more about the consultation. The details of sessions in August closest to Martlesham are as follows:

Venue	Date and Time
Felixstowe Town Hall (Council Chamber) Undercliff Rd W, Felixstowe IP11 2AG	Thursday 2 <sup>nd</sup> August 16.00-19.30
Suffolk Coastal District Council (Deben Room) East Suffolk House, Station Road, Melton, IP12 1RT	Monday 6 <sup>th</sup> August 16.00-19.30
Rushmere St Andrew Village Hall Humber Doucy Lane, Rushmere St Andrew, IP4 3PD	Thursday 16 <sup>th</sup> August 16.00-19.30

## Forthcoming meetings:

No full Council meeting in August

Development Plans Committee –  
Wednesday 08 August 2018

Parish Council  
Wednesday 05 September 2018

Recreation & Amenities Committee –  
Wednesday 12 September 2018

All meetings start at 7.30pm in the Parish Room, Felixstowe Road, and are open to the public, who are welcome to ask questions or make comments to the council during a public forum.

## Contacting the Council

Clerk to Martlesham Parish Council, Parish Room, Felixstowe Road, Martlesham, Woodbridge IP12 4PB

Telephone: 01473 612632

e-mail: [clerk@martleshamcouncil.org.uk](mailto:clerk@martleshamcouncil.org.uk)

website: <http://martlesham.onesuffolk.net> for latest news & events

Parish Office opening times:

9am – 12noon, Mon – Fri, excluding public holidays, but please book an appointment in advance.

## CELEBRATING MARTLESHAM COMMON LOCAL NATURE RESERVE

**OPEN DAY – SATURDAY 1ST SEPTEMBER 2018, 11AM – 3.30PM**

**A free family event led by the Greenways Countryside Project and organised by the Parish Council to promote the varied and important wildlife of this valuable heathland.**

Others taking part are Martlesham Conservation Group, Martlesham in Bloom and Ipswich Suffolk Wildlife Trust Group.

Two guided walks will take place at 11.30am and 2.30pm.

Fun activities for children will include building 'wildlife homes' such as bird and bug boxes. Displays and refreshments will also be in the Parish Room. Toilets available.

If the weather is poor, the whole event will move indoors.

Free parking at Martlesham Community Centre, Felixstowe Road, IP12 4PB, adjacent to the site.

## THE MARTLESHAM HEATH CONTROL TOWER MUSEUM IS OPEN FOR THE SEASON

**Learn the Story of this Fascinating Airfield from 1917 to 1963.**

It is Open every SUNDAY afternoon 2 - 5 pm until 28th October.

FREE ENTRY (Donations appreciated)

It is located at the rear of Parkers Place, off Eagle Way, Martlesham Heath IP5 3UZ

Easy Free Parking.

Special openings for School and Club Groups available by arrangement.

For more information phone Ian on 01473 611665 or Howard on 01473 274300  
email: [control.tower@mhas.org.uk](mailto:control.tower@mhas.org.uk)

## CHRIS BLUNDELL'S DISTRICT COUNCIL REPORT FOR AUGUST 2018

**Consultations.** Currently there are two very important consultations taking place at the moment. One is about the re-warding of the combined proposed new East Suffolk District Council that is set to have 55 Councillors across 29 wards. The consultation period is from 3rd July 2018 until 27th August 2018. If Interested you are invited to contribute you views with evidence to the Local Government Boundary Commission for England (LGBCE) at [www.lgbce.org.uk](http://www.lgbce.org.uk)

The LGBCE will publish their decision 23rd October 2018.

**The second** important consultation is about the new Local Plan for Suffolk Coastal District Council. This document will replace the current Core Strategy and all it's associated documents when it has completed all the stages necessary to bring it into legal force. The consultation begins on the 20th July 2018 until the 14th September 2018 (8 weeks).

However at the time of writing the consultation portal is not open. However you will be able to find out more detail by using Suffolk Coastal Local Plan/Consultation after 20th July 2018.

**Leisure Centres.** At the present time SCDC and Waveney are so tied up with their respective Local Plans and the merger of the two councils that there is little time for other activities. However, SCDC were pleased recently to announce that the revamped Deben Leisure Centre is now open and well worth a visit. Next on the list for revamping is the Leiston Leisure Centre and following that will be the Leisure Centres at Felixstowe.

I hope that all visitors to the Martlesham Village Fete on 14th July 2018 enjoyed themselves and were able to learn more detail about what has been achieved by and for Martlesham Parish and also what is happening around the area.

**If you would like to discuss these** or any other matters with me I can be contacted on 01473 622716 or by email at [www.chris.blundell@eastssuffolk.gov.uk](mailto:www.chris.blundell@eastssuffolk.gov.uk)

*Chris Blundell, SCDC District Councillor (Martlesham Ward)*

## JOHN KELSO'S DISTRICT COUNCILLORS REPORT

### Consultation on the electoral review for the new East Suffolk Council

The Local Government Boundary Commission for England have now made their recommendations on the Councillor warding for the new East Suffolk Council and are asking residents for their views on their proposals.

Their proposal is to link the existing Martlesham ward with Purdis Farm, Foxhall, Brightwell and Waldringfield. More information is available at [www.eastsuffolk.gov.uk](http://www.eastsuffolk.gov.uk) or you can email your comments to [reviews@lgbce.org.uk](mailto:reviews@lgbce.org.uk). The closing date for comments is the 27th August 2018.

### Consultation on the new Suffolk Coastal Draft Local Plan

The Local Plan sets out the level of growth to be planned for in Suffolk Coastal and identifies where this should be located and how it should be delivered. The Plan sets out the planning policies which the Council will use to determine planning applications across Suffolk Coastal. This Local Plan will cover the period 2016 to 2036.

The full document is available to view at [www.eastsuffolk.gov.uk](http://www.eastsuffolk.gov.uk) or by prior arrangement with the Parish Clerk at the Parish Council office.

The consultation will run until 14th September 2018.

### CEG development east and south of Adastral Park latest update

Two planning applications were received at Suffolk Coastal Planning Department on the 3rd July to deal with reserved matters.

Application DC/18/2774/ARM deals with the new junction to be created on the A12, the acoustic bund on the A12 boundary, the new main boulevard within the site and the new entrance junction to be created at Ipswich Road.

Application DC/18/2775/ARM deals with the main Green infrastructure within the site along with the allotments and community orchard.

Both of the above applications can be viewed at [www.eastsuffolk.gov.uk](http://www.eastsuffolk.gov.uk)

### Possible sale of Police H.Q. for housing development

It was great to see so many of you at the exhibition which was held in the pavilion on the 18th June. I don't think the police representatives were left in any doubt as to the strength of feeling within our community regarding their proposals. Thank you to all of you who took the trouble to attend to make your views known.

If you wish to discuss any of the above issues, or any other District Council matters, please email me [john.kelso@suffolkcoastal.gov.uk](mailto:john.kelso@suffolkcoastal.gov.uk) or telephone 01473 612632.

*John Kelso District Councillor Martlesham Ward*

## MARTLESHAM HEATH

### HOUSEHOLDERS LTD

#### FIRES

With the continuous prolonged warm and dry weather we have been experiencing, it is vital that we remind everyone about the 'No Fires' policy that is in place for Martlesham Heath and the adjoining SSSI land.

In recent weeks there has been a stark reminder of the devastating impact heath and moorland fires can have.

There has been recent evidence of people having BBQ's in the woodland areas and this kind of action can lead to significant fires.

#### As a Reminder:

-No Fires Policy on the MMHL Heath and SSSI Land

-Think before using fireworks or having a garden fires at this time of the year and the impact they could have on the area

-If out walking or having a picnic, be sure to **dispose** of cigarettes and other smoking materials carefully and ensure that they are fully extinguished

-Please **take your litter home** with you. Even a discarded glass bottle can start a fire

-Report anyone having fires or BBQ's in these areas

I have noticed how many blackberries are on the bushes this year, if we get some rain we may well have a bumper crop. Always great to see the blackberries being picked when they are ripe.

We can be contacted on

01473 612207, or email [mhh@martlesham.org.uk](mailto:mhh@martlesham.org.uk)

our website is <http://martleshamheathhouseholdersltd.onesuffolk.net>

# BACK AND FOOT CLINIC

PROFESSIONAL HELP for ALL those aches and pains

Over 20 years' treating a wide range of problems:

- Back Pain • Headaches • Sciatica • Joint Problems • Arthritic Pain

Foot Health Care

Toe Nails cut • Corns and Calluses removed, and much more

## Clifford Spencer Bull DO, ND, MAO

The Osteomyology Clinic  
106 Garrison Lane  
Felixstowe  
**01394 277689**  
Free Parking

Woodbridge Complementary  
Health Centre  
Sandy Lane, Martlesham  
**01394 388234**  
Free Parking

for more information call or visit [www.backandfootclinic.co.uk](http://www.backandfootclinic.co.uk)



## IZZY IXER

MCMI, BWOY Dip, British Wheel of Yoga Diploma Teacher and Coach

**Yoga Classes in Martlesham Heath & Melton:** *Beginners, Returners & Advanced Individual Yoga Programmes: For back pain, balance problems & sports performance* at:

The Natural Health Centre, 24A Thoroughfare, Woodbridge IP12 1AQ  
Ned Wombwell Osteopathy, Albany Villa, Melton Road, Woodbridge IP12 1PD  
Woodbridge Complementary Health Centre, Sandy Lane, Martlesham IP12 4SD  
Telephone: 01394 388234 [www.wchc.info](http://www.wchc.info)

**Wellbeing Coaching:**

*Help with managing life's challenges at work and at home*

**Telephone: 01473 625115**

email: [izzy.ixer@btoopenworld.com](mailto:izzy.ixer@btoopenworld.com)

[www.izzyyoga.co.uk](http://www.izzyyoga.co.uk) • [www.bluepebblecoaching.co.uk](http://www.bluepebblecoaching.co.uk) • [@IzzyYoga](https://twitter.com/IzzyYoga) & @IzzyIxer

## Pre School Dance Classes Little Stars

- Fun
- Friendly
- Confidence building
- Improve concentration
- Make friends
- Learn to work with others
- Improve co-ordination



Castle Hill Church  
Tuesday 11.15 - noon  
Ipswich Regent  
9.45 - 10.30am  
Martlesham Heath Pavillion  
Thursday 1 - 1.45pm

Have a look at the 'Comments' page on our website to see why dancing can be such a positive experience [www.sadpa.co.uk](http://www.sadpa.co.uk)

£4.50 per class

Email [louise@sadpa.co.uk](mailto:louise@sadpa.co.uk)

to book your child's place and FREE trial  
Suffolk Academy of Dance & Performing Arts



Your local Aerial and Satellite specialist

- Digital TV aerial installations • Poor reception • Freesat supply & install
- Freeview installations • Satellite problem solving • Multi-room television
- Extra aerial points • FM & DAB radio aerials • TV wall mounting
- Out of hours call out available, *subject to availability*

Call now!!! 01473 716976 / 07860 156421



[www.digital-dimensions.tv](http://www.digital-dimensions.tv) E-mail [info@digital-dimensions.tv](mailto:info@digital-dimensions.tv)

## PAULS TREE SERVICES LTD. Covering Suffolk

- ✓ Free Quotes On Request ✓ Pruning, Reshaping
- ✓ Trees & Shrubs ✓ Fully Insured
- ✓ NPTC Qualified ✓ Tree Surgery & Felling
- ✓ All Waste Chipped & Removed From Site
- ✓ Emergency Services Available
- ✓ Stump Grinding



Felixstowe 01394 277776 Mobile 07979 226497

[www.paulstreeservices.co.uk](http://www.paulstreeservices.co.uk) Lazy Acres, Falkenham, IP10 0QY

## KAREN SMITH'S BEAUTY ROOM AT MARTLESHAM LEISURE CLUB

Fully qualified Beauty and Holistic Therapist covering a wide range of beauty treatments including Massage, Reflexology, Hopi Ear Candles and Brazilian Waxing

Appointments available day and evenings

Call 07975 897935



SwimSure Swim School Ltd

[www.swimsureswimschool.co.uk](http://www.swimsureswimschool.co.uk)

Let us teach your child to swim!

At the Beacon Hill Pool, Martlesham

Adult & Child & Pre-school lessons during the day

Term time lessons after school and at weekends

for children of all ages and abilities

Small groups - only 4 children to a class!

School Holiday Crash courses too!

Lessons also available at the Colneis Pool, Felixstowe & the Diviline Pool, Ipswich

To book or for more details,

Email [swimsure@btinternet.com](mailto:swimsure@btinternet.com)

Phone 01473 613269



Follow us on Facebook for updates to our programme

## DMonkey Computers



Microsoft Certified  
Professional  
Systems Engineer

Also

\*\*\* Website Design and Hosting \*\*\*

- Upgrades / Repairs / Diagnostics
- Laptops / Desktops / Printers
- Windows speed-up
- Virus / Spyware removal
- Wireless setup
- Networking
- Data recovery
- Security
- Broadband tune-up
- Helpful advice
- Home/site visit - or return to base
- Tuition
- VHS to DVD conversion

Daytime  
Evenings  
Weekends

Call: 01473 610440 or 07521 731578

email: [support@dmonkey.co.uk](mailto:support@dmonkey.co.uk) web: [www.dmonkey.co.uk](http://www.dmonkey.co.uk)

## WOODBIDGE/MARTLESHAM DOMESTIC REPAIRS

Washing m/c's, Dishwashers,  
Tumble Dryers, Cookers,  
Fridge and Freezers  
Repairs and Spares



Martlesham, Woodbridge,  
Ipswich, Felixstowe & surrounding Villages

Keith Harvey  
01394 388888

## MARTLESHAM PLAYSCHOOL,

Thank you to everyone who supported our Fun Day on June 30th – fundraisers, stall helpers, staff and coming along on the day. Thank you also to our sponsors – Haart, Gilbert Heating & Plumbing, and Bates, Wells, Braithwaite Solicitors. We made a profit of £888! We shall spend this on new resources.

The children went to Hollow Trees Farm for their summer trip, they had lots of fun in the sun, feeding and stroking the animals, finding out about the animals and wildlife.

We wish all our school leavers the best for the future, you will all be missed, thank you for having lots of fun with us.

We are offering themed weeks throughout our summer holiday club including a jungle week and space week with lots of fun filled activities for the children to enjoy.

Please visit our new Facebook page—Martlesham Playschool or call us on 01473 635986 for more details or to book a visit. From September we only have morning spaces on a Friday, plus 1or2 on Wednesday & Thursday mornings. Afternoons we have spaces except on a Tuesday.

*Martlesham Playschool, Deben Avenue, Martlesham, IP5 3QR Tel: 01473 625986*

*Kesgrave Playschool, Millennium Jubilee Hall, Millennium Way, Kesgrave, IP5 2EN Tel: 07746 907060*

*Email: mplayschool@btinternet.com*

*Charity Register No: 288268*



## Bright Stars Fun Activity Sessions for Pre-school aged Children

Bright Stars - Autumn Dates for Your Diary  
Fun Activity Sessions for Pre-school aged Children

10.30 am to 12.00 noon

2nd and 4th Mondays of each month during term times at St Michael's Church Centre, Martlesham Heath IP5 3PL

All youngsters of 0 to 5 years old are welcome to come along to Bright Stars with their parents, grandparents, friends, family and/or carers. These mornings are free and usually involve singing, games, making crafts to take home and telling stories from the Bible for the first half hour. We then have refreshments when the adults can chat and the children can play until approximately 12noon.

You are welcome to come along to any of our mornings, just turn up, no need to let us know in advance. We look forward to seeing you this autumn!

The Autumn Term 2018 session dates:

September 10th

September 24th

October 8th

HALF TERM

November 12th

November 26th

December 10th

If you would like one of our Bright Stars leaflets with the session dates on it give us a ring on the number below and we will be happy to send it to you.

If you would like further information please contact:

Sonya & Maureen Burrows

Tel.01473 625196

## KESGRAVE LIBRARY NEWS

**Summer Reading Challenge Crafts** – The following craft activities will be taking place during August:

Wednesday 1st – Saturday 4th – Dennis the Menace and Minnie the Minx both wear striped jumpers. Design a new jumper for these cartoon characters from the Beano.

Sunday 5th – Saturday 11th – Betty from the Beano has a Yeti as a best friend. Make your own Yeti mask;

Sunday 12th - Saturday 18th – Is it a bird, is it a plane? No, it's Banana Man. Create Banana Man flying over the earth;

Sunday 19th – Saturday 25th – Dennis loves his pet dog Gnasher. Make a paper plate Gnasher;

Sunday 26th – Saturday 1st September – Can you find all the characters from this year's challenge hidden around the library?

Activities are free. Parents must stay with under eights. There's no need to book – just turn up and have a go.

### Free BookStart Sessions – every Thursday including all School Holidays.

These are free activities for pre-school children and their parents or carers. Why not come along and join Abby every Thursday for songs, rhymes and poems?

Tot Rock - action rhymes, songs and stories for toddlers - 9.45am – 10.15 am.

BabyBounce – songs and rhymes for babies – 10.30am – 11.00am.

### Summer Reading Challenge – Mischief Makers - Saturday 21st July – Sunday 2nd September.

If you haven't signed up yet, you're not too late! Kesgrave Library will be running sessions during the following hours (Monday 9.30 – 11.30 a.m. Tuesday 2.30-5.00 p.m. Wednesday/Thursday 2.30-5.30 p.m. Friday 9.00–12 noon, Saturday 2.30-5.00 p.m. and Sunday 10.00 –1.00 p.m.) where children can come in, enrol and talk to the volunteers about the books they have read.

During the above times there will also be free craft activities which are inspired by the Animal Agent theme.

To finish the challenge each child needs to read 6 books, at least one of which needs to be non-fiction.

Kesgrave Library, Kinsey House, Kays Close, Kesgrave will be open:

Monday	9am to 12 noon	
Tuesday	9am to 12 noon &	2.30pm to 5pm
Wednesday		2.30pm to 6pm
Thursday		2.30pm to 8pm
Friday	9am to 12 noon &	2.30pm to 6pm
Saturday	10am to 5 pm	
Sunday	10am to 3pm	

[www.suffolklibraries.co.uk](http://www.suffolklibraries.co.uk)

## WOODBRIIDGE LIBRARY

Tuesday 14th August, 4-5pm – Woodbridge Young Adult Book Club

A reading group for the young people of Woodbridge who love Young Adult or Teen books. Run by young people for young people. Talk about the hottest new releases. Refreshments will be provided.

This month we are reading "We Were Liars" by E Lockhart.

From Saturday 4th August throughout the month - Sale of withdrawn children's books, both fiction and non-fiction

All proceeds go to Woodbridge Library.



### Martlesham in Bloom

**Hanging baskets in The Square and planted containers elsewhere in Martlesham**

The floral hanging baskets in The Square and the several containers of summer bedding plants in The Square as well as outside Martlesham Post Office and the Community Hall are looking very attractive.

We are very grateful to the following who have given a donation towards the cost of the baskets and containers or provided other help:-

#### Donors

RDP Accountants  
Dummett Copp LLP  
Duncans Butchers and Bakery  
Martlesham Heath Surgery  
Anglia Care Trust  
Martlesham Heath Dental Surgery  
Martlesham Community Hall Management Committee  
Martlesham Monthly  
Saplings  
Martlesham Community Council  
Martlesham Heath Householders Ltd  
Martlesham Heath Pavilion  
Home Meadows Nursery Ltd  
The Douglas Bader  
Other support  
William Barton (Landbridge)  
Martlesham Parish Council  
Martlesham Post Office

#### Martlesham Common Open Day -

##### Saturday 1st September

This Open Day is being arranged by Martlesham Parish Council, helped by the Greenways Project on Saturday 1st September 2018, further details in the Parish Council's report in this magazine.

We will have a stand with more information about the results so far of the Martlesham Common Wildlife Survey and how you can help.

We are also arranging an activity on the Common for people of all ages and our display will also show some scenes from our earlier Martlesham in Bloom albums.

*For further information on the above or any Martlesham in Bloom activity please contact:*

*Email - [martleshaminbloom@gmail.com](mailto:martleshaminbloom@gmail.com) or J Maureen Burrows (Secretary) on 01473 625196.*



## MARTLESHAM VILLAGE FETE



### "What Martlesham does well, is 'community'"

As overheard at the fete, this could not have been more apparent on the big day! Many from Martlesham (and neighbouring areas) came together to enjoy entertainment, arts and crafts, and activities from local businesses. There were great opportunities to learn about the valuable work of volunteers in our local charities and organisations. Many also enjoyed free trips on the vintage bus, admired the vintage vehicles on display, and got involved in the football competition. There was plenty of bustling activity, but no overcrowding, as we enjoyed the sunshine and tucked into food and refreshments.

Of course, none of this would have been possible without the help of many. Organised by volunteers in a working group of Martlesham Parish Council, we are grateful for the financial support from SCDS Enabling Communities Budget Scheme (kindly arranged by John Kelso) and Martlesham Service Centre. We are appreciative of the facilities and help provided by St Michael's Church, MHHL,



Martlesham Pavilion, Martlesham Youth FC, the MH100 Team and pupils of Kesgrave High School. Special thanks also to Kesgrave Army Cadets, who helped to ensure the day ran smoothly.

We would be grateful for any feedback you have at [www.surveymonkey.co.uk/r/YZ8C25L](http://www.surveymonkey.co.uk/r/YZ8C25L).

We also need volunteers to help organise the fete next year! If you can help, do get in touch.

Please leave your contact details on the SurveyMonkey, email: [mvfete@gmail.com](mailto:mvfete@gmail.com), or call: 07526 292336.

Any offer of help, no matter how small, will be greatly appreciated.

Until next year!



### MARTLESHAM BRASS

#### 'Making Music Fun in East Anglia'

Martlesham Brass are taking a well-earned rest during August! Our next event after the summer break will be our 22nd Birthday Concert on Saturday 29th September 2018, so please put this date in your diaries. Tickets for the concert will be available in September - more details next month.

We would love to hear from new players, young and old, with or without experience. Our aim is to encourage anyone who feels they would like to play in a brass band to come and have a go! If you would like to join us, or if you already play or have previously played a brass instrument and feel that you would like to come along and meet us, please email [join@martleshambrass.co.uk](mailto:join@martleshambrass.co.uk) or use the contact details below.

Liz Howard. (Publicity Officer)

[e\\_m\\_howard@talk21.com](mailto:e_m_howard@talk21.com)

01473 625617.

Registered Charity No.1100922. Visit our website [www.martleshambrass.co.uk](http://www.martleshambrass.co.uk)





## DOYLE ELECTRICAL SERVICES LTD.

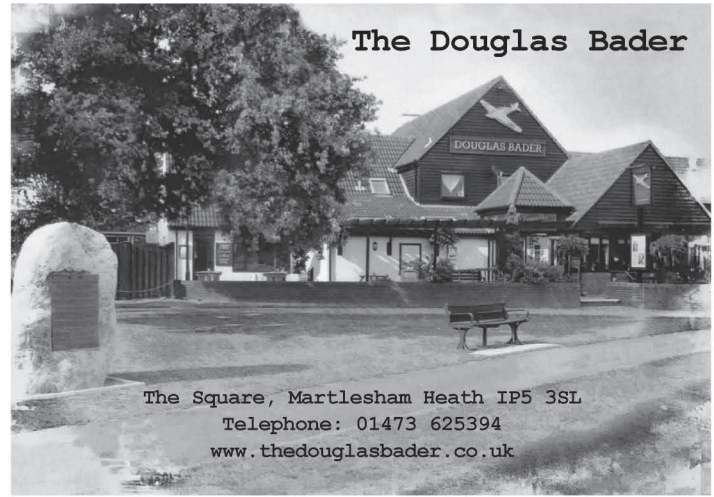
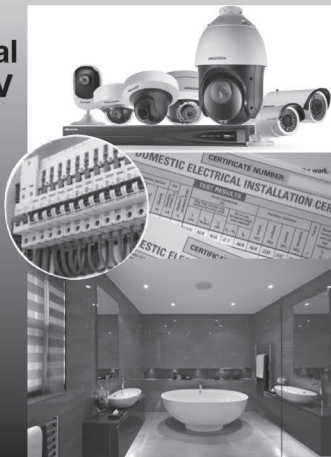


### Domestic and Commercial Electrical Contractors, Solar PV and Renewable Energy Specialists

NIC EIC Approved Contractors, established for over 25 years. New Commercial and Domestic Electrical Installations, LED Lighting, Electrical Safety Testing, Electric Vehicle (EV) Charge Points, Structured Cabling, CCTV, Fire Alarm, Solar PV.

Telephone: 01473 622674  
Fax: 01473 620941  
Email: [sales@doyleelectrical.co.uk](mailto:sales@doyleelectrical.co.uk)  
Website: [www.doyleelectrical.co.uk](http://www.doyleelectrical.co.uk)

Unit Q Bristol Court,  
Martlesham Business Park,  
Martlesham, Suffolk IP5 3RY



### The Douglas Bader

The Square, Martlesham Heath IP5 3SL  
Telephone: 01473 625394  
[www.thedouglasbader.co.uk](http://www.thedouglasbader.co.uk)



**LB GROUP**  
Chartered Accountants  
Business Advisers  
Chartered Tax Advisers

### With you every step of the way

your local trusted Chartered Accountants

- Our services include:
- ACCOUNTANCY AND AUDIT
  - PERSONAL AND CORPORATE TAX ADVICE
  - INHERITANCE TAX AND TRUST PLANNING
  - CORPORATE FINANCE
  - FINANCIAL PLANNING AND ADVICE
  - INSOLVENCY AND MUCH MORE

LB Group are delighted to announce the acquisition of Isles and Storer Accountants.

Contact LB Group Chartered Accountants on **01473 359 720** quoting Martlesham18

[info@lbgroupltd.com](mailto:info@lbgroupltd.com)  
[www.lbgroupltd.com](http://www.lbgroupltd.com)



#### Three reasons to call

- Family run business
- 40 years experience
- Your local flooring specialist

- Stainfree & Wool Carpet
- Luxury vinyl tiles
- Vinyl
- Woven & Natural Flooring



01473 626 097 | [info@debencarpetsandflooring.co.uk](mailto:info@debencarpetsandflooring.co.uk)

Unit N Bristol Court, Betts Avenue, Martlesham Heath, Ipswich, IP5 3RY  
[www.debencarpetsandflooring.co.uk](http://www.debencarpetsandflooring.co.uk) [@Debencarpets](https://twitter.com/Debencarpets) [/DebenCarpetsAndFlooring](https://facebook.com/DebenCarpetsAndFlooring)

[www.debencarpetsandflooring.co.uk](http://www.debencarpetsandflooring.co.uk)



### Nu-Life Furnishings Ltd

BLINDS • CURTAINS • UPHOLSTERY

- Window, Door & Conservatory Blinds
- Curtains, Tracks & Poles • Awnings • Shutters
- Fly Screens • Upholstery
- Foam, Loose Covers & Sundries

1000's of fabric samples to choose from  
Stockists of all leading fabric manufacturers  
Free estimates and advice

Call us today on **01728 747745**  
Email: [info@nu-lifefurnishings.co.uk](mailto:info@nu-lifefurnishings.co.uk)  
or visit [www.nu-lifefurnishings.co.uk](http://www.nu-lifefurnishings.co.uk)

Showroom at  
**17 Riverside View,  
Wickham Market IP13 0TA**

#### LUXAFLEX

blind shutter and awning inspiration dealer

new blind and curtain showroom  
all leading fabric manufacturers

over 400 hanging samples  
over 350 pattern books  
40 blind books to choose from

### Essex & suffolk PEST SOLUTIONS

#### Your Local Pest Control Experts

- Free advice, fast response
- Highly accredited (NPTA)
- Discreet – unmarked vehicles
- Fully qualified & insured
- Domestic & commercial

[info@eandspestsolutions.co.uk](mailto:info@eandspestsolutions.co.uk)  
[www.eandspestsolutions.co.uk](http://www.eandspestsolutions.co.uk)

Telephone: **01473 328092**

Mobile: **07979 301334**



### PAUL YOUNGS

EST. 2000

#### WINDOW CLEANING & CARPET CLEANING

INCLUDING UPHOLSTERY & PROTECTION.  
PROCHEM CERTIFIED.

PRESSURE WASHING, PATIO & DECKING.  
ALL FRAMES AND SILLS CLEANED. WATER-FED POLE AND TRADITIONAL METHODS USED.  
CONSERVATORY ROOFS, FASCIAS, SOFFITS & GUTTERING CLEANED. GUTTERS EMPTIED.

**38 DEBEN AVENUE, MARTLESHAM HEATH  
IPSWICH IP5 3QP**

MOB: **07899 895947**  
HOME: **01473 613144**

[youngscleaningservices@gmail.com](mailto:youngscleaningservices@gmail.com)

# Beautevas

beauty and tanning  
all your beauty needs taken care of

facials  
waxing  
electrolysis  
eyelash & brow tint  
eye brow shape  
manicure  
pedicures  
gel polish



01473 610606  
www.beautevas.co.uk

advanced anti-ageing  
comcit facial  
sunbeds  
spray tanning  
body wraps  
massage  
icon ultra facelift  
specialised foot care

15 the square Martlesham Heath Ipswich IP5 3SL

## PILATES CLASS

All levels and  
beginners welcome

Monday & Friday  
at 12.15pm  
held in the  
Martlesham Pavilion

To book your place please  
call/email  
**KAT**  
**07804 909083**  
**Katspilates@live.com**



## Office Assist

Professional, Affordable, Flexible  
A VIRTUAL ASSISTANT FOR THE MODERN BUSINESS

DO YOU OFTEN WISH  
YOU HAD MORE HOURS IN THE DAY?

With Office Assist, we can provide the most valuable  
of commodities; time. Our professional, affordable and  
flexible service can help you get those hours back;  
by taking on the jobs you either don't want to do or can't do.

Let us take on those administration tasks,  
so you can get on with your business.

Payment Securing (Credit Control)  
Invoicing  
Diary & e-mail Management  
Research  
Updating / Maintaining Databases  
Travel & Accommodation Arrangements  
Typing up Notes / Minutes

Mobile number 07967 093820  
Email: [maryl@officeassistuffolk.com](mailto:maryl@officeassistuffolk.com)  
[www.officeassistuffolk.com](http://www.officeassistuffolk.com)

## GB Jackaman

Plumbing & Bathroom  
Specialist

Established 25 Years

All trades to complete  
your luxury bathroom.  
We can supply and fit,  
or fit only.

Free Advice and Quote:  
01473 613218  
07751 806101  
[jackamang@aol.com](mailto:jackamang@aol.com)

## ChipsAway Ipswich Express Car Body Shop

- Bumper scuffs
- Paintwork scratches
- Minor dents
- Small accidental damage
- Alloy wheels
- Repairs fully guaranteed
- Same day service
- Convenient local bus service  
available and park and ride
- Courtesy car available  
(Subject to availability)
- Open Monday to Friday 9-5pm  
Saturday 9-1.30pm



Please call Paul Geary **01473 613352**  
or visit [www.chipsawayipswich.co.uk](http://www.chipsawayipswich.co.uk)

Unit 16, Anson Road, Martlesham Business Park,  
Martlesham Heath IP5 3RG



Here for you  
every hour  
of every day

139 Main Road, Kesgrave  
**01473 860030**

It's the little things that count  
[www.eastofengland.coop/funerals](http://www.eastofengland.coop/funerals)

# Bridge Farm Day Nursery

## Rated Outstanding by OFSTED 2015

[www.bridgefarmdaynursery.co.uk](http://www.bridgefarmdaynursery.co.uk)



- Web cams – watch your children while they play!
- Baby, Toddler and Pre-School Room
- Nursery Grant Funding for 2-4 year olds
- New 24 place pre-school room open!
- Qualified, friendly and experienced staff

Please call **01394 388062**

Building C2, Bridge Farm, Top Street, Martlesham, Suffolk IP12 4RB

---

### **MARTLESHAM HEATH AVIATION SOCIETY**

Our meeting on Friday 6th July at the Community Hall, Felixstowe Road was well attended despite the warm summer evening and the attractions of Wimbledon!

Peter Gunn, author of books on the airfields of East Anglia was accompanied by his wife Janet. He gave a fascinating story of airfields past and present. Some of them long forgotten and active in the Great War. Many radar sites and decoy airfields to distract the enemy from operational airfields.

Many churches contain stained glass windows in memory of past tragedies were spoken about by Peter. His illustrations made the evening most enjoyable.

Here at Martlesham our society has been responsible for the stained glass windows in the church of St Michael's and All Angels. These depict the crests of the Royal Flying Corp, the Royal Air Force and the USAAF as well as the crest for the Aeroplane and Armament Experimental Establishment. A poignant reminder of the aviation history of our village. On the Barrack Square between the two war memorials MHAS were responsible for the third monument which tells the story of the important aviation history of Martlesham.

Our speaker spoke of many such historical reminders of aviation in East Anglia. A vote of thanks was given by our chairman, Martyn Cook.

Next month is the occasion of our annual outing. This year we will be visiting the famous Shuttleworth collection of flyable vintage aircraft. On the way we will visit what remains of RAF Tempsford, the secret aerodrome where agents were flown out to occupied Europe in WW2. A few tickets may still be available if you would like to accompany us on the coach. Contact Howard King on 01473 274300 if you are interested.

Alan Powell 01473 622458 [www.mhas.org.uk](http://www.mhas.org.uk)

---

### **MARTLESHAM CARPET BOWLS**

There is not very much to report this month, we are about half way through the Summer League still with mixed results. We managed to beat Bealings 8 - 2 away then lost to a total defeat 0 - 10 away at Knodishall although in all fairness 2 of the games were lost on the last end by a couple of shots. We managed to take 3 points ( 1 win and a draw )from Tuddenham away I think this is the first time we have done that !

We also played a very enjoyable friendly against URC at the end of June. We have two games against Old Felixstowe coming up. One a summer league fixture the other a Cup Game that we got involved with about 4 years ago.

We are still actively looking for new members. We play on Tuesday afternoon and evenings and Friday afternoons in the Community Hall on Felixstowe Road behind Tesco's. All the equipment is provided by the Club and it is an enjoyable and inexpensive way to spend a few hours with a little gentle exercise thrown in. All enquiries or for further information please contact our Secretary Ian Hunt on 01473 611947

Judith Longman

---

### **MARTLESHAM LADIES CLUB**

Our Coffee Morning held in June was blessed with lovely sunshine and proved very successful, with visitors enjoying coffee and cake in the garden after visiting the various stalls and entering competitions. We raised £425.00 which brings our total for the year to £680.00. This money will be used to buy much needed equipment for local children suffering from Global Development Delay. Many thanks for everyone who supported us to raise money for this little known cause.

We will be enjoying a summer break during July and August and our next evening meeting will be on 13th September.

Our meetings are held on alternate Thursday evenings in the Richards Room beginning at 7.15pm. To find out more contact Doreen Boar 01473 622768.

---

### **GOLDEN GIRLS**

We are a group of ladies who live on their own and we meet for friendship and mutual support. Our coffee mornings are held on the second Thursday of each month at 11.00am at St. Michael's Church Centre. We frequently go out for lunch and shopping after the coffee morning, and visit theatres, cinema etc. Our next meeting is on Thursday 9th. August when we are going to The Brook Hotel at Felixstowe for lunch and calling at Goslings Garden Centre on the way home. For more information contact Ann Price on 01473 620832

---

### **MARTLESHAM HISTORY SOCIETY**

**MONDAY 13TH AUGUST**

#### **The Baron, the Policeman and the Mayor - An Ipswich Riot 1863**

**with Linda Sexton.**

Did you know there was a riot in Ipswich, come along and find out !

All meetings are held in the Pavilion, Martlesham Heath, Ipswich IP5 and commence at 7.30 pm.

Admission fee is £2.50 and meetings are open to all.

---

### **WOOLLY WONDERS**

The knitting has carried on even in the heat!

We even managed to knit in PinMill on our summer outing last month.

Usually you'll find us at The Runway Cafe next to St Michael's 10-12 every Thursday come rain or shine.

Always good to see a new face complete with knitting needles.

---

### **SUFFOLK WILDLIFE TRUST**

We plan to hold a nature walk along the River Deben starting at Melton on Saturday 18th August at 2pm meeting at Melton Picnic site, OS grid reference TM 288 503, postcode IP12 2PA. We hope to see a range of birdlife, plants, butterflies and dragonflies and other wildlife on the walk. There are no charges but donations to Suffolk Wildlife Trust are very welcome.

Please contact 01473 625630 or 01394 411237 if you would like more information.

In September we plan to take a walk from Shingle street on Saturday 8th September at 2pm. Please meet at the car park OS grid reference TM 367 427. There are no charges but donations to Suffolk Wildlife Trust are very welcome. Please contact 01473 625630 or 01394 411237 if you would like more information.

Phil Smith

# Foot trouble?

Foot Station Visiting practice

Foot Health Professional  
MCFHP MAFHP registered  
RN 30 years experience

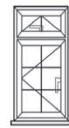
Offering treatment to nails, corns, callus, verrucae, and diabetic feet in the comfort of your own home.

Call Sue on

**07707 651398**

[hutchings\\_s@yahoo.co.uk](mailto:hutchings_s@yahoo.co.uk) - [www.footstation.co.uk](http://www.footstation.co.uk)

# Barry Clamp & sons Ltd. est 1984



Quality installation and replacement.

- Windows, Doors, Conservatories in
- UPVC, Aluminium and Hardwood
- also Fascias, Soffits and Cladding.



WHERE QUALITY COUNTS!



Call us today- **01473 623745**  
for a free no obligation quotation. **07801 030634**

No pushy salesman,  
just honest advice from the owners.

[www.barryclampandsons.co.uk](http://www.barryclampandsons.co.uk)

51 Dobbs lane, Kesgrave, Ipswich

# DAVE CHAPMAN MoT and Service Centre

MoTs • Servicing • Tyres • Exhausts  
Air Conditioning • Diagnostics  
Cambelts • Brakes • Batteries

Unit 2, Anson Road,  
Martlesham Heath, Ipswich IP5 3RG  
Telephone: 01473 621502/610428  
[www.davechapmanltd.co.uk](http://www.davechapmanltd.co.uk)

# Lynne's PET Care

Over 10 years Experience Winner of



- Dog Walking
- Cat Feeding
- Pet Care Visits
- Pet Taxi Service

Special Merit Awards  
& Accreditations  
for the  
National Petsitter  
of the Year Awards

Local Reliable Friendly Service  
Fully Licensed and Insured

Tel: (01473) 612977  
Mob: 07743 140694



## ARCAPE Social Media Results

Your customers aren't on social media, are they?  
So, why should your business need a social media presence?  
We can help your company be a social media star!



- ✓ Accounts Setting Up
- ✓ Content Creation
- ✓ Full Management



If you'd like to increase your business' brand awareness  
get in touch for a free consultation!

[info@arcape.com](mailto:info@arcape.com)

01473 480046

[arcape.com](http://arcape.com)



be daring!  
with  
Slimming World

**TUESDAY**

**Martlesham Heath**

St. Michael & All Angels Church,  
The Drift, IP5 3PL  
5.30 & 7.30pm  
Contact Sarah on 07825 222076

[slimmingworld.co.uk](http://slimmingworld.co.uk) [f](https://www.facebook.com/slimmingworld) [i](https://www.instagram.com/slimmingworld) 0344 897 8000



# KWMCC

KESGRAVE COMMUNITY  
& CONFERENCE CENTRE

Situated in an excellent location, near Ipswich in the heart of Suffolk, Kesgrave Community and Conference Centre is a stone's throw from the A14 and A12 trunk roads.

- Choice of 5 rooms – suitable for business meetings, corporate events, training, exhibitions, weddings, christenings and private functions. The centre also boasts an indoor sports hall and extensive outdoor area which can be used for all types of sporting events and activities.

Easy to get to and free parking  
Licensed bar and flexible catering options  
Friendly professional staff

Kesgrave Community and Conference Centre  
Twelve Acre Approach, Kesgrave, Ipswich, Suffolk IP5 1JF  
Tel: 01473 612648 • [reservations@kwmmcc.co.uk](mailto:reservations@kwmmcc.co.uk) • [www.kwmcc.co.uk](http://www.kwmcc.co.uk)  
Registered charity number 304779

# martlesham monthly

WOULD YOU LIKE TO  
ADVERTISE HERE?

If so, please email  
[martleshamadverts@gmail.com](mailto:martleshamadverts@gmail.com)

## PORTAL WOODLANDS CONSERVATION GROUP

Firstly, thank you to everyone that attended the litter pick on the 27th May – the woods have never looked so tidy!

Secondly, our annual Glow Worm Survey and Bat Walk on the 29th June received a good number of keen spotters, despite the fact that it had been cancelled a few days before! 13 Glow worms were recorded in all, this being significantly more than the 7 seen last year.

Our Volunteers have been focussed on laying bark chippings on paths throughout the woods over the past two months. Because the chippings will likely have rotted by autumn, we'd really appreciate any help in distributing them beforehand at one of our volunteer work mornings or as a team building exercise (Contacts below.)

And finally, Nature Explorers have been a bit thin on the ground recently due to the exam period, but fortunately we had one arrive to learn about wheelbarrow maintenance on the 19th May.

### Dates for the Diary

**Volunteer Work Morning** (all ages) Saturday 15th September, 10:00am – Noon.

Meet at the Education Area. Tools, training and light refreshments provided.

All welcome - no need to book. N.B. Unfortunately there will be no August work morning.

### Nature Explorers (11-18 year olds)

Saturday 15th September, 9:00–11:00am.  
Please book a place via our email below.

**Nature Watch Club** (5-11 year olds) 2018 dates to be confirmed.

New volunteers of all ages and abilities are always welcome. No experience needed.

For further information, please contact us at [pwcg.martlesham@gmail.com](mailto:pwcg.martlesham@gmail.com), phone: 01473 612632 or visit our website: [pwcg.onesuffolk.net](http://pwcg.onesuffolk.net) or join our members' Facebook Group by messaging Duncan Sweeting.

*George Pennick, Nature Explorer and Young Volunteer*

*Photo: Wheelbarrow Maintenance S Corley*



## MARTLESHAM HEATH SSSI LTD

**On Sunday 5th August at**

**2pm**

**there will be a**

### **GUIDED WALK**

across the Martlesham Heath SSSI looking at the summer wildlife around us and explaining the ongoing management work.

We hope to raise your awareness of the magnificent wildlife that is on our doorstep and provide an understanding of the management work that has taken place.

It is eight years since Martlesham Heath Householdors entered into a ten year management agreement with Natural England that has provided the funds to do additional work on a larger scale.

The walk is open to all.

Please meet at the gate opposite the windsock near the interpretative signboard that lies between Westland and Harvesters Way.

*Phil Smith*

## MARTLESHAM CONSERVATION GROUP

The heathland of Martlesham Heath is particularly able to support a range of butterflies as there is a great mix of vegetation including heather, gorse grassland and trees with areas of short vegetation that suit many butterflies. These butterfly species include a nationally rare species, the Silver Studded Blue butterfly that uses heather as its food plant.

On Sunday 5th August at 2pm there will be a guided walk across the Martlesham Heath SSSI looking at the summer wildlife around us and explaining the ongoing management work. Open to all. Please meet at the gate opposite the windsock.

This year the Silver Studded blue butterflies on our heath emerged much earlier than in most previous years. The hot spring weather seemed to bring forward their emergence to the beginning of June. They could be seen in small numbers on our heath in the area of heather to the north of the boundary fence from early June through into early July.

Several years ago they occurred across more areas further northwards on our heath, where currently they are absent. Our ongoing management work is aimed at producing a greater area of the heather and other ground conditions they require, hopefully to encourage them to spread northwards. Many thanks to those who helped count these butterflies this year. The total number counted was substantially more than last year and included at least 100 butterflies north of the boundary fence.

Our next work party will be on Sunday 12th August at 10am. Please meet on the ridge bank that runs east-west across the SSSI. We will work on bracken clearance.

Bracken is poor for conservation purposes as unfortunately it only supports a narrow range of wildlife in part due its toxic nature but also due to its ability to smother other underlying plants. The dwarf shrub layer of heather and grassland that it may have replaced is much more productive in comparison, supporting a wide range of invertebrates and higher

animals (birds, reptiles, and mammals such as rabbits). Consequently it is important to reduce the extent and coverage of bracken in order to promote more heather and grassland to the benefit of a wider range of wildlife.

Bracken continues to dominate in some areas of our heath although we have had some success in pushing it back in other areas due to an ongoing regime of cutting and spraying.

In August look out for Grayling butterflies, these are a typical butterfly of dry sandy heathland relying on sparsely growing fine grasses such as Sheep's Fescue, but also with plenty of bare ground in open positions. Several areas of the heath were scraped to help promote similar conditions.

You may also see the second emergence of several other butterflies including the Common Blue and Brown Argus butterflies.

*Phil Smith 01473 625630*

## Our talented neighbours...

Meet bakers and makers, sew-ers and growers, painters, jewellery-makers, wood turners and whittlers: we're all at your local Country Market every Tuesday morning. What a whole heap of talent is on our doorstep – you only need to step out to find out for yourself.

Did you know that research on spending by local authorities in the UK shows that, for every £1 spent with a small or medium-sized businesses, 63p stays in the local economy, compared to 40p spent with a larger business\*. Spending your money on genuinely locally grown, sewn, baked and made food and produce benefits our local community. It also relieves our roads of freight traffic and our air of pollution; because food is fresher, it needs less packaging, it contains more nutrients and it's better for you. Many people seek out local honey because they believe it to relieve their symptoms of hayfever. Locally grown plants are already accustomed to the soil and climate in your neighbourhood – and their grower is on hand to offer planting and caring advice, should you wish to ask.

Where can you get that extra special gift or treat? Have a bowl made from a branch from a favourite tree; commission a picture of your pet; enjoy gluten-free cake and delicious jams and preserves made from locally grown fruits; buy a card picturing a favourite local scene.

So not only can you enjoy eating, growing, using or giving something nice you've bought from the Martlesham Heath Country Market, you can also feel a warm glow of having contributed to the success of the local economy.

Remember, there's plenty to see every Tuesday morning, 9-11:15, in the Martlesham Heath Pavilion. Enjoy a cuppa after some gentle browsing? "You're welcome!"

\*Source: The Guardian

## MARTLESHAM HEADWAY HUB

Brain injury charity Headway Suffolk runs a new monthly social support group for people with dementia and a carer in Martlesham. It takes place every fourth Thursday of the month at St Michael's Church Centre, The Drift in Martlesham from 11.45am – 3.15pm. The person with dementia must be accompanied by a carer.

It costs £6.00, which includes a fish and chips lunch as well as refreshments.

The charity already runs an established large group for people with dementia in Ipswich at St Augustine's Church in Bucklesham Road on the second Friday of the month, where up to 60 people attend. The groups rely on the goodwill of volunteers to help in the kitchen, with preparations and tidying away, as well as engaging clients in discussion and with various activities, such as indoor games, cognitive exercises and singing.

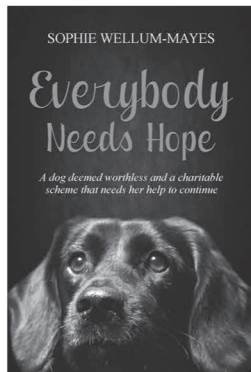
If you would like to make a referral or want to volunteer, contact Maureen Howes on 01473 712225 or email: [maureenhowes@headwaysuffolk.org.uk](mailto:maureenhowes@headwaysuffolk.org.uk).

## Headway Suffolk Neuro Conference

Headway Suffolk are also holding its 4th Neuro Conference on Wednesday 17 October 2018 at Kesgrave Conference Centre, Twelve Acre Approach, Kesgrave Dr Jane Hawking will be a keynote speaker. Following last year's conference, Dr Hawking became a patron of Headway Suffolk.

At this year's conference, she will talk about her life as a family carer, the challenges that are faced by carers, and how to improve life and conditions for carers. Dr Hawking is the fourth speaker confirmed for the conference, joining world-renowned health expert Professor Robert Winston, Dr Hilda Hayo, Chief Admiral Nurse and CEO of Dementia UK, and Dr Sajid Alam, a consultant in stroke medicine at Ipswich Hospital.

Tickets are priced at £40 (plus booking fee) and are available from Eventbrite at: [www.eventbrite.co.uk/e/headway-suffolk-neuro-conference-2018-tickets-40194431627](http://www.eventbrite.co.uk/e/headway-suffolk-neuro-conference-2018-tickets-40194431627).



## Everybody Needs Hope – a new book to save Brainy Dogs

A new book telling the story of Hope - Headway Suffolk's once unwanted Brainy Dog – through her own eyes has been released to help the project survive.

Everybody Needs Hope charts the life so far of five year-old Hope, a black Labrador crossed with a Cocker Spaniel, who provides therapy to adults with a brain injury or a neurological condition during rehabilitation sessions at the charity.

Deemed unwanted and 'good for nothing' as a working breed by her owners, Hope was saved by the project's co-ordinator Sophie

Wellum-Mayes in 2012, who found her quiet and placid nature the ideal temperament to help clients in their recovery.

Hope has been integral to the success of Brainy Dogs, interacting with hundreds of clients and showcasing her skills over the years, as the project has gone from strength to strength. But once again, she faces an uncertain future with funding due to expire in October.

In a bid to keep the project alive, Sophie has turned her hand to penning the book, with huge support from Happy Self Publishing, to get the book published.

"The book is written from Hope's point of view and starts from when she was an unwanted puppy, and goes between work and home life, including being trained by prisoners at HMP Hollesley Bay, and the events we have done. The last chapter is called 'an uncertain future'

Everybody Needs Hope is available on kindle, priced at £3.76, and in paperback, priced at £8.99: [www.amazon.co.uk/Everybody-needs-HOPE-worthless-charitable/dp/1721676309](http://www.amazon.co.uk/Everybody-needs-HOPE-worthless-charitable/dp/1721676309).

Headway Suffolk supports 250 adults a week who have an acquired brain injury or a neurological condition through an extensive range of rehabilitation, therapy and support services. Full information at: [www.headwaysuffolk.org.uk](http://www.headwaysuffolk.org.uk).

## Gas Service & Central Heating Repairs

**Chris Westaway**

British Gas Trained ♦ Gas Safe Registered



### COMPASS HEATING

4 York Road, Martlesham Heath, Ipswich, IP5 3TL

Boiler Replacement ♦ Power Flushing

Central Heating ♦ Boilers ♦ Fires ♦ Water Heaters ♦ Radiators & System Controls  
Landlords Certificates ♦ Gas Safety Inspections

Email: [compass.heating@btinternet.com](mailto:compass.heating@btinternet.com)

Tel & Fax: 01473 333665 Mobile: 07730 580875



### Kitchen and Bathroom Specialists

For a Professional & Complete Design and Installation Service

- Replacement Doors
- Granite worktops
- Total Refurbishments
- Wetrooms
- Electrical, Plumbing, Plastering
- Tiling and Carpentry

Tel : Phil 07758215618 Email : [space.francis@ntlworld.com](mailto:space.francis@ntlworld.com)  
Tel : Darren 07809723186 Email : [darren.dsdesign@ntlworld.com](mailto:darren.dsdesign@ntlworld.com)

## Specialist Tree Services

- Tree Surgery
- Section Dismantling
- Tree Felling
- Hedge & Shrub Pruning
- Tree Planting
- Stump Grinding
- Firewood

**FREE QUOTE!**



FRIENDLY PROFESSIONAL  
ADVICE & FULLY INSURED

**The Tree GP**  
THE TREE SPECIALIST



**Tel: 01473 232626**  
**Mob: 07917 725445**

email: [bednchri2@yahoo.com](mailto:bednchri2@yahoo.com)  
N.P.T.C. Qualified

## Fraser-Hann Financial Services Ltd.

Need pension or  
investment advice?

We have been offering  
friendly, local, professional  
and independent financial  
planning advice for over  
20 years.

Fraser-Hann Financial Services Limited  
12 Holly End, Martlesham Heath, Ipswich IP5 3UW  
Authorised and Regulated by the Financial Conduct Authority

**Tel: 01473 620530**  
**E-mail: [chris.hann12@hotmail.com](mailto:chris.hann12@hotmail.com)**  
**Web: [www.fraser-hann.co.uk](http://www.fraser-hann.co.uk)**

# martlesham monthly

**WOULD YOU LIKE TO  
ADVERTISE HERE?**

**If so, please email**  
[martleshamadverts@gmail.com](mailto:martleshamadverts@gmail.com)

## **MARTLESHAM BOWLS CLUB CELEBRATES 90 YEARS**

Martlesham Bowls Club was formed in 1928 and we have copies of the minutes from 1935 when the annual subscription was just two shillings.

No heavy boots or or high heels were to be worn on the green!

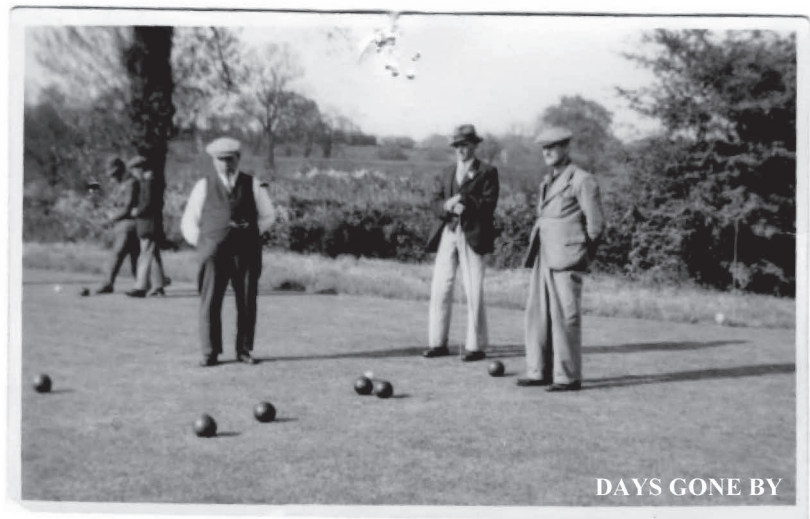
The committee meetings were held in the schoolroom, as the Bowls Pavilion was a small hut and only replaced when the existing Club House was built by the members and officially opened in 1997 by Martlesham Parish Councillor Laurence Burrows.

In 1939 it was reported that the bowls club had had its most successful season in the history of the club which was brought to an abrupt end owing to the outbreak of hostilities. (Presumably World War II)

This picture shows members from around that period enjoying the game.

The names Les Finch or Bob and Jim Chapman are written on the back.

Unfortunately we do not know who they are but perhaps one of your readers might have more knowledge.



Here we are today enjoying a game of bowls in the sunshine.

If you think you might be interested in joining our club, information can be found on our website [martleshambowlsclub.com](http://martleshambowlsclub.com) or email to [mary.drake@talktalk.com](mailto:mary.drake@talktalk.com) alternatively tel 01473 622598 for information.



## MOTHERS UNION

**On August 1st at  
2.30pm**

Steve is coming to tell us about the Home Emergency Alarm Response service HEARS.

The talk will be followed by a Cream Tea. What a treat in store !

**On September 5th at 12.30pm  
Overseas Lunch.**

We are having our annual fund raising event for Mothers Union projects.

All welcome to come and have a good lunch meet old friends and make new ones.

## What a wonderful world

Don't we live in a beautiful country? This year has been especially wonderful as we've enjoyed proper seasons with snow during the winter, a damp spring and a heat wave during the summer. OK, it did have its set backs with slushy snow, icy paths and driving thirsts, but one thing we can be sure of: the rain **will** come!

When Louis Armstrong sang those words in the title, he recognised the impact of keeping our world special - amazing occurrences in nature: rainbows, birds, trees, plants, animals; and when we take the time to enjoy them, it causes us to smile and to respect each other, as well as our environment. To share the wonder of our created world by the way we respond to each other.

In the story of creation God made man and woman and commissioned us to be stewards of creation. To look after the world around us and keep our environment healthy, not only for ourselves but also for the health of the planet with a good balance of plants, animals and life style to keep the air clean and to provide us with a regular supply of food. Then he pronounced all that he had created was 'good'.

As the Psalmist says: When I look up into the night skies and see the work of your hands—the moon and the stars you have made— I cannot understand how you can bother with mere puny man, to pay any attention to him! (Psalm 8:3,4)

But he does!

*Rev Margaret Rittman  
Martlesham with Brightwell.*



## Alpha Course

### REGISTRATION EVENT – Wednesday 12<sup>th</sup> September 2018

St Michael's church, opposite Douglas Bader pub 7.00pm-8.30pm

7.00pm –tea/coffee/snacks/puddings

7.45pm –30-minute talk entitled "Is there more to life than this?"

8.15pm –closing remarks & registration for course starting 19<sup>th</sup> Sep

**Course:** Martlesham Alpha Course

**Dates:** Registration event 12<sup>th</sup> Sep 18;  
11-week course starts 19<sup>th</sup> Sep 2018

**Time:** Wednesday evenings, 7.00pm-9.30pm

**Location:** St Michael's, The Drift, Martlesham Heath, Suffolk,  
IP5 3PL

**Further info:** Phone: Toby 01473 612659 / Email:  
alpha@martleshamcofe.org.uk

**What is Alpha?** Alpha is a series of interactive sessions that freely explore the basics of the Christian faith

**Who's it for?** Alpha is for anyone who's curious. The talks are designed to encourage conversation and explore the basics of the Christian faith in a friendly, open and informal environment. No questions are out of bounds and you are free to discuss as much or as little as you wish.

**How does it work?** Alpha is eleven sessions with the option of a day away in the middle. Each session includes food, a short talk, and a discussion at the end where you can share your thoughts. At any point, if you think that Alpha isn't for you, that's not a problem. There's no pressure, no follow-up, and no charge.

**How much does it cost?** There's no charge for Alpha.

### MARTLESHAM VILLAGE HALL TOP STREET

Although we have regular bookings for evenings throughout the year, morning and afternoon sessions are available.

The hall is ideal for small groups who need to meet at a reasonable cost, discount for residents of Martlesham.

*For any queries or bookings please contact 01473 623655.*

### THE MARTLESHAM HEATH PAVILION

Martlesham Heath Pavilion is a great location for children's parties at the weekend.

You can check availability and book the Pavilion online at:

**[martlesham.org.uk/pavilion](http://martlesham.org.uk/pavilion)**

Alternatively, please contact the booking secretary:

**email: [bookingsecmhp@gmail.com](mailto:bookingsecmhp@gmail.com)**  
phone: 07732 199712

### MARTLESHAM COMMUNITY HALL AND RICHARDS ROOM

To enquire about booking Martlesham Community Hall or the Richards Room please telephone the Booking secretary on 01473 623203 who will be available to help you with your enquiry or will telephone you back (please speak slowly and repeat the number)

Alternatively e-mail

**[martcomhall@btinternet.com](mailto:martcomhall@btinternet.com)**

Building  
God's  
Family  
Together

## THE CHURCH IN MARTLESHAM & BRIGHTWELL

**PARISH MINISTER:** The Revd Toby Tate The Rectory 17 Lark Rise Martlesham Heath  
Church phone 01473 612659 (rest day Friday)

**ASSOCIATE MINISTER:** The Revd Margaret Rittman Woodlea The Street Martlesham  
07914 771061 (working days: Sunday, Wednesday, Thursday)

**READERS:** Carolyn Smith 74 Heathfield, Martlesham Heath  
Malcolm Rittman, Woodlea, The Street, Martlesham

**ELDERS:** John Mellen 2 The Avenue Falcon Park Martlesham 01473 805989  
Margaret Rollins 9 Angela Close, Martlesham 01473 623868  
Simon Smith 11 Squires Lane Martlesham Heath 01473 612410 (evening only)  
Liz Welham 23 Deben Avenue Martlesham Heath 01473 622709  
Lynn Wilder Kenton Nr Debenham 01728 860627

Services for the Month	Martlesham Heath St Michael's	Martlesham St Mary's	Brightwell St John's
<b>Sunday 5th August</b>	9.45am All Age Service	11am Holy Communion (Prayer Book)	8am Holy Communion
<b>Sunday 12th August</b>	9.45am Holy Communion	11am Morning Worship	6.30pm Evensong
<b>Sunday 19th August</b>	9am Breakfast@9	11am Holy Communion	8am Holy Communion
<b>Sunday 26th August</b>	9.45am Holy Communion All Age	11am Morning Prayer	6.30pm Evensong

### Midweek Services

Holy Communion each Wednesday at 10am in St. Michael's.  
**A warm welcome awaits you at all our services**

**Prayer Diary** Please include the following as an addition to your daily prayers

### August

**5 for the Gifts we have to help those around us**

- 6 for the Runway Coffee Shop
- 7 for Martlesham Community Responders
- 8 pray for the residents of The Avenue
- 9 for the safety of children on holiday
- 10 for St Michael's Church fellowship
- 11 for the bereaved and those unwell
- 12 thank you Lord for sending your Son and the Holy Spirit**
- 13 for all our Healthcare Professionals
- 14 for the Police
- 15 for the residents of The Chase
- 16 for St Mary's Church fellowship
- 17 for the work of the Bible Society around the world
- 18 for Ambulance and Fire Services

**19 pray for all Christian Ministers**

- 20 for Traidcraft
- 21 for the Guides and Scouts

- 22 pray for the residents of The Drive
- 23 for our Schools, Universities and places of Education
- 24 pray for St John's Church Brightwell fellowship
- 25 for Charities supporting environmental and social issues

**26 for all those who teach children about the Christian Faith**

- 27 for all the activities that take place at St Michael's Church
- 28 for those who manage the woodlands around us
- 29 pray for the residents of The Oaks
- 30 for the Children's Society
- 31 for those who are uncertain about their future

### September

- 1 for family relationships.
- 2 Lord thank you for being ever present with us**
- 3 for those preparing for return to places of Education
- 4 for all the clubs taking place in Martlesham and Martlesham Heath

**PJ PRINT**  
LITHO & DIGITAL PRINT

Everything you're  
looking for  
in a Printer



PJ Print (East Anglia) Ltd.,  
16 The Quadrangle Centre,  
The Drift, Nacton Road, Ipswich IP3 9QR  
Tel: 01473 276010  
Email: info@pjprint.com  
Web: www.pjprint.com

Carpet &  
upholstery  
Protection available

**CARPET  
THERAPY**

**Carpet & Upholstery  
Cleaning Service**

as recommended by  
the Leiston & Woodbridge  
Carpet Company  
and  
Halesworth & Saxmundham  
Carpet Centres

**Tel: 01728 830927  
07793 227038  
FOR A FREE QUOTE**

Cleaning Locally  
for over  
14 years

## ONE STOP MOT & SERVICE CENTRE

### FREE COLLECTION & DELIVERY

- Servicing & Repairs
- Brakes & Clutches
- Tyres & Exhausts
- Motorhome Repair Specialist
- Shock Absorbers – Welding Work
- Wheel Alignment & Balancing
- Full Diagnostic Service
- MoTs While-U-Wait
- Online MoT Booking Service
- Car Air Conditioning

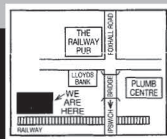
## Kesgrave Tyre & Exhaust Centre



**223 Foxhall Road, Ipswich**  
**www.kesgravetyres.co.uk**



**IPSWICH**  
**01473 710720**



*Remember,  
Summer  
Bank Holiday  
is on  
Monday  
27th August!*

If you would like to advertise  
in these spaces, please contact  
martleshamadverts@gmail.com

## Afternoon Tea 'by the bridge'

Our afternoon tea is served in the restaurant with the stunning background of the river Orwell. Enjoy the beautiful panoramic view with friends and family.

Afternoon tea includes

- 3 sandwiches • 3 sweets • savouries • scone and jam • plus unlimited tea
- Gift vouchers are available both in-store and online

Booking is required with a period of at  
least 24 hours notice.  
Afternoon tea is served from 3pm  
Monday to Saturday,  
and from 2pm-4pm on Sunday.



**01473 786616**  
eat@suffolkfoodhall.co.uk  
www.suffolkfoodhall.co.uk

# J.W. MILLER

PAINTING & DECORATING

YOUR LOCAL DECORATOR  
FOR MARTLESHAM HEATH

TELEPHONE: 01473 626728  
MOBILE: 07888 699306



## Curtains & Blinds

By

## Broomfield Interiors

Design planning and making  
Fabrics, Poles, Accessories and Trimmings

Full Fitting Service

**01 473 625392**

email: broomfinteriors@btinternet.com  
www.broomfieldinteriors.co.uk



Family Run Business  
Established for over 35 years  
Free Surveys & Quotations  
No Job too small



Unit 20A, Seven Acres, Newbourne Road, Martlesham IP12 4PR

**BOOTH (TARMACADAM)  
LIMITED  
SURFACING  
CONTRACTORS**

**DRIVES – FOOTPATHS  
CAR PARKS  
GROUNDWORKS  
TENNIS COURTS  
BLOCK PAVING**

[www.boothtarmacadam.co.uk](http://www.boothtarmacadam.co.uk)

**Ipswich 01473 811757  
Fax: 01473 811756**



**J. T. WILDING LTD.**

**YOUR LOCAL  
HEATING, GAS, OIL, ELECTRIC & PLUMBING  
ENGINEERS**

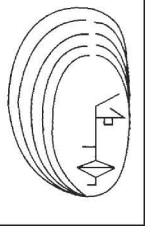
Boiler Replacement and Installation  
Modifications, Maintenance and Servicing  
24 hour Emergency Service (for regular customers)  
Fixed Price Gas and Oil Servicing



**01473 611 744**

[jtwilding.co.uk](http://jtwilding.co.uk)

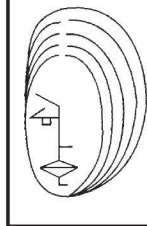
28 Anson Road, Martlesham Heath IP5 3RG



**Hairdressing**

by

*Carolyn*



*Professional hair-care at competitive prices  
in the comfort of your own home.*

**Tel: (01473) 287542 - Mob: 07710 432813**

**PAVING**

**B & M CONCRETE LTD**

MANUFACTURERS & RETAILERS OF

- Paving Slabs • Ornaments • Balustrades
- Fencing & Fencing Posts • Path Edging

**ALL AT SENSIBLE PRICES • FREE LOCAL DELIVERY**

**OPEN Mon - Fri 8 - 5pm Sat 8.30 - 12pm**

The Landscape Centre, Back Road, Kirton IP10 0QQ

**TEL (01394) 448556**



**FARTHING**  
FUNERAL SERVICE

Local expertise since 1840 from dedicated family funeral directors.

We are here to guide you through every aspect of your farewell. With our experience, compassion and attention to detail, you can depend on us.

650, Woodbridge Road

Ipswich 01473 272711 [www.farthingfunerals.co.uk](http://www.farthingfunerals.co.uk)

**BARKER GOTELEE**  
SOLICITORS

Life | Land | Business

Call **01473 611211**  
[barkergotelee.co.uk](http://barkergotelee.co.uk)

41 Barrack Sq, Martlesham IP5 3RF  
Free parking

We all need legal services from time to time

Our friendly and approachable local solicitors can help with a host of legal matters.

- Accident claims
- Family breakdowns
- Buying or selling property and land
- Insolvency and debt recovery
- Developing your business
- Making a will
- Dispute resolution
- Powers of attorney
- Employment
- Trusts and tax

**Martlesham Computers**  
Your Local Computer Professionals

e: [sales@martleshamcomputers.co.uk](mailto:sales@martleshamcomputers.co.uk)  
w: [www.martleshamcomputers.co.uk](http://www.martleshamcomputers.co.uk)

**T: 01473 239118**

No foreign call centres.  
No automated queues.

> **Computer Systems**  
The best deals ever !

> **Repairs and Upgrades**  
Call-outs to solve any problem from £35

> **Total Cover™**  
If anything goes wrong we'll fix it.

